

About Town

Senior Methodists of South Methodist Church will meet tomorrow night in the church, Miss Pearl Ebbels, former deaconess of the church, will be a guest...

Miss Bridget O'Connell, daughter of Mr. and Mrs. Robert D. O'Connell, 131 Park St., and Miss Nancy Pukin, daughter of Mr. and Mrs. Richard P. Pukin, 279 Park St., both students of Norman Slide, 101 E. Middle Type, were successful candidates in a recent piano playing audition sponsored by the National Guild of Piano Teachers...

The VFW Auxiliary has been invited to attend joint installation of officers Friday at 8 p.m. at East Hartford VFW, 2083 Bldg. St., starting at 7 p.m. at New Britain VFW, 23 State St., and Windsor Locks VFW, Fairview St., and at 8 Citizens Club.

Senior Citizens from Pittsfield, Mass., will be guests of the Senior Citizens Club Sunday at the Senior Citizens Center, 2083 Bldg. St., starting at 7 p.m. at New Britain VFW, 23 State St., and Windsor Locks VFW, Fairview St., and at 8 Citizens Club.

Daughters of Isabella, will sponsor a Desert Card Party Saturday at 2 p.m. in St. James' School Hall. Proceeds will benefit the Bishop's Relief Fund. The event is open to members and friends. Those attending are reminded to bring playing cards.

New England's Leading Two-Year Professional School of ACCOUNTING. Applications now being accepted for Sept., 1967, admission. HARTFORD INSTITUTE OF ACCOUNTING 66 Forest St., Hartford—Tel. 247-1115

Manchester Evening Herald

Partly cloudy and cool to night, low 45-50; partly sunny and mild tomorrow, high in the 70s.

Average Daily Net Press Run For The Week Ended May 15, 1967 15,195

Man. LXXXVI, No. 184 (TWENTY-FOUR PAGES—TWO SECTIONS) MANCHESTER, CONN., THURSDAY, MAY 18, 1967 (Classified Advertising on Page 21) PRICE SEVEN CENTS

Marines Call for Guns On Their Own Position



U.S. Marine corporals aid a wounded comrade, foreground, while others carry the bodies of their buddies toward a helicopter for evacuation from the area. The Marines have been trying to punch Viet Cong units from the area, two miles south of the DMZ. (AP Photofax)

SAIGON (AP)—A platoon of the U.S. 4th Infantry Division called artillery fire on its own position in a fight with Communist forces today. Hours later, there was no word of the fate of its 40 or so men. American officers reported the development in the central highlands as U.S. Marines, farther north, fanned out below the demilitarized zone after a night of enemy bombardments that killed 11 Americans and wounded 20.

Two companies tried but failed to fight their way through gunfire and six-foot-high elephant grass to relieve the platoon. Two helicopters flying to the rescue were hit by enemy fire, but managed to fly out under their own power. There was no word on enemy casualties. For an hour before dawn Communist guns, mortars and rockets rained more than 200 rounds on Dong Ha, Gio Linh, Camp Carroll and other bases of the Marine outposts just below the division between North and South Vietnam.

At dawn Marine companies struck out from the nearby post of Chu Pong in a new attempt to hunt down the Red forces they have been battling in the northwestern part of South Vietnam for weeks. There was suspicion that the North Vietnamese were preparing for some dramatic show of force in honor of Ho Chi Minh's 77th birthday Friday, and the Marines were determined to hunt any such attack. The heavy night shelling and hard fighting in the Marine sector was reflected in weekly casualty figures announced today. The U.S. Command said 254 Americans and 1,942 enemy were killed last week. The American toll was slightly less than the 274 killed the week before, a record for the year. The enemy toll, while no record, was slightly more than the 1,908 the previous week.

The heaviest damage in the pre-dawn bombardment came from the Chu Pong area. A line, called RMK-BRL, had contracts for about three-quarters of that work. Member firms of U.S. construction equipment vendors for the Senate subcommittee. The Saigon, include Raymond International, of Delaware, Inc.; Morrison of Asia, Inc.; Brown & Root, Inc.; and J.A. Jones Construction Co. of New York.

The GAO criticized the man-agement of construction pro-gram in Vietnam during a massive expansion stemming from the buildup of U.S. forces there. Its report accused the Navy and an American construction combine of management short-comings, and said: "As a result, shortcomings reported by the General Accounting Office on Oct. 1, 1966, have not been corrected."

The GAO said the combined cost of the program was in-creased to a considerable extent, although there is no way to reliably measure the exact cost. The GAO said the combined cost of the program was in-creased to a considerable extent, although there is no way to reliably measure the exact cost.

Manchester Garden Club PLANT SALE. ANNUALS, HERBS, PERENNIALS, GARDEN ACCESSORIES. MANCHESTER Y 79 NORTH MAIN STREET THURS., MAY 18—9 A.M.—1 P.M.

HOUSE AND HALE MAY SALE DAYS! 23 GOOD BUYS FOR AND UP. boys' sweat shirts, Cannon bath towels, misses pant tops, Enoz moth crystals, nuggets, waste bins, misses' bras, girls' 2-3x, 3-6x play sets, girls' 7-14 jamaica shorts, sets, seamless nylons, girls' cotton polos, misses' nightgowns, boys' sport, polo shirts, picnic jug, misses' summer playwear, boys' walking shorts.

Dollar Day's Thurs., Fri., Sat. Choose either jamaica shorts or 2-pc. jamaica set. Solid colors. Sizes 7 to 14. \$1

CHOOSE TERRIFIC VALUES FROM THESE EXCITING COMPANION ITEMS. REGULAR 19.88 hand lawn mower \$2 off. aluminum chaise, 5-web style for \$6. 38" terry cloth, 2 yds. \$1. lycra panty girdles, 7.95 value \$3.99. men's short sleeve sport and dress shirts, 2 for \$3. hibachi grill, 4 for \$4. acrilan-acrylic blankets, 6 for \$6. cafe curtains, 2 for \$5. ladies' cool cotton shifts, 2 for \$3. boys' slacks, 2 for \$5. misses' pajamas, 2 for \$5. Fiberglass drapes, 2 for \$6.

Scotts TURFBUILDER plus 2. Weed and feed your lawn in half an hour. It's true! TURF BUILDER PLUS 2 save lots of time and effort. But even more impressive are the results it turns un-slightly weedy patches into a handsome, vigorous lawn—the kind that brings compliments from friends and neighbors alike.

BLISH LARSEN HARDWARE CO. HARDWARE, Inc. 783 MAIN ST.—643-4121 84 DEPOT SQUARE—649-5274. Weeds fade away... or Scotts will pay. If you aren't pleased with TURF BUILDER PLUS 2 for any reason whatever—send your sales slip to Scotts, Maryville, Ohio 43040 and they will send a refund promptly.



Ruckus Develops on UCLA Campus. Divergent groups battle over a United Nations flag at the UCLA campus where the burning of a Nazi flag turned into general disorder yesterday. The flag burning was planned by a pro-Rhodiasian independence group called CRISIS but the whole thing turned into a flag-of-war over the U.N. flag. School officials broke up the noise. (AP Photofax)

Israelis Stay Calm. TEL AVIV, Israel (AP)—A riot, and not further information, was immediately available today that it was suitable that Israeli forces had reinforced the southern frontier. Israelis in general remained calm as Syria and the United Arab Republic moved troops up to the border in preparation for the Israeli attack they claim is coming.

Dodd Asks More Time For Defense. WASHINGTON (AP)—Sen. Thomas J. Dodd told the Senate Thursday he would like more time to prepare a defense against the Senate ethics committee's recommendation that he be censured for financial misconduct. Leaders have notified all financial institutions that the censure resolution will take up Monday for debate.

No. 1 Envoy Of Hungary Gets Asylum. WASHINGTON (AP)—Mystery surrounded the whereabouts today and motives of the highest-ranking Communist diplomat sent to defect in the United States. State Department officials said Janos Radvanyi, Hungarian charge d'affaires who sought and promptly received refuge here, has asked that his decision be attributed to personal reasons.

Co-op Move Begins To Save Railroad. WASHINGTON (AP)—A federal-state move to save the bankrupt New Haven Railroad from liquidation got under way today as the director of President Johnson. In attendance was Alan S. Boyd, secretary of the new Department of Transportation.

Quacks Are Back, but Where Is Spring? Further evidence that spring may yet arrive before summer in this scene from Portland, Maine, where two dozen Pekin ducks were liberated in Deering Oakes Pond. The ducks were delighted to be back after long winter in city greenhouses. They were transported in a half dozen quacker boxes — what else? (AP Photofax)

Armed Jail Escapees Retaken in Maryland. BALTOONA, Pa. (AP)—Two more by overpowering two guards and later wounded a hostage. Police waged a manhunt for them Wednesday night in the Baltimore area. Four state troopers made the arrests. They said they took a .38 caliber revolver and a .35 caliber automatic from the pair. Christensen and McClelland escaped while being taken from state patrol.



TSU Gets Tough, Calm Prevails Around Campus. HOUSTON, Tex. (AP)—Texas Southern University's 10,000 students invoked a "get tough" policy and calm prevailed on the campus today after rioting in which a policeman was fatally shot and four other persons were wounded.

Wasted Equipment in Viet Worth About \$100 Million. WASHINGTON (AP)—A "We want to know what's going to happen to this equipment worth about \$100 million worth," said Lippman, chief of U.S. construction equipment vendors for the Senate subcommittee. The Saigon, include Raymond International, of Delaware, Inc.; Morrison of Asia, Inc.; Brown & Root, Inc.; and J.A. Jones Construction Co. of New York.

Armed Jail Escapees Retaken in Maryland. BALTOONA, Pa. (AP)—Two more by overpowering two guards and later wounded a hostage. Police waged a manhunt for them Wednesday night in the Baltimore area. Four state troopers made the arrests. They said they took a .38 caliber revolver and a .35 caliber automatic from the pair. Christensen and McClelland escaped while being taken from state patrol.

News Tidbits. Reports in Washington indicate the Johnson administration may be considering a new appeal to the UN for help in ending the Vietnam war, despite past failures and rebuffs from the Communists. Former President Eisenhower is expected to be discharged from Walter Reed Army Hospital tomorrow. The largest block of shares ever traded on the New York Stock Exchange—a million shares of Pacific Pinedale—was recorded today. Members of the Senate led, Federation of Post and Harry L. McClelland, 32, serving 30 years for armed robbery, the trooper said.

News Tidbits. Reports in Washington indicate the Johnson administration may be considering a new appeal to the UN for help in ending the Vietnam war, despite past failures and rebuffs from the Communists. Former President Eisenhower is expected to be discharged from Walter Reed Army Hospital tomorrow. The largest block of shares ever traded on the New York Stock Exchange—a million shares of Pacific Pinedale—was recorded today. Members of the Senate led, Federation of Post and Harry L. McClelland, 32, serving 30 years for armed robbery, the trooper said.

News Tidbits. Reports in Washington indicate the Johnson administration may be considering a new appeal to the UN for help in ending the Vietnam war, despite past failures and rebuffs from the Communists. Former President Eisenhower is expected to be discharged from Walter Reed Army Hospital tomorrow. The largest block of shares ever traded on the New York Stock Exchange—a million shares of Pacific Pinedale—was recorded today. Members of the Senate led, Federation of Post and Harry L. McClelland, 32, serving 30 years for armed robbery, the trooper said.

News Tidbits. Reports in Washington indicate the Johnson administration may be considering a new appeal to the UN for help in ending the Vietnam war, despite past failures and rebuffs from the Communists. Former President Eisenhower is expected to be discharged from Walter Reed Army Hospital tomorrow. The largest block of shares ever traded on the New York Stock Exchange—a million shares of Pacific Pinedale—was recorded today. Members of the Senate led, Federation of Post and Harry L. McClelland, 32, serving 30 years for armed robbery, the trooper said.



WASHABLE BEDSPREADS WITH MATCHING DRAPES
 All with rounded corners, heavy cord welting, graceful full drop.
 Full size - 6.99
 Matching Draperies - 1.99
 36" Cafes - 1.99
 63" Drapes - 3.49
 Valance - .89
 Compare at 7.99

IRREGULARS CANNON BATH TOWELS
 Solids jacquard woven. Pink, green, blue, gold.
99c
 If perfect 1.69

2 AND 3-PC. BATH MAT SETS
 Choose colors to match your bath towels. Choose sturdy rayon or cotton.
1.74
 Compare at 2.79



JUMBO SIZE KAPOK BED PILLOWS

1.19

Compare at 2.59
 Moisture resistant. Nature's natural fibers. All white except with pink or blue cord. 21" x 29" jumbo length.



21" GRAND POWER MOWER
 WITH 3 H.P. BRIGGS & STRATTON ENGINE

PRICE CUT \$5 44.88

Our regular 49.88

Powerful 4-cycle engine, with wind-up impulse starter - no pulling! New modern aerodynamic wind tunnel design for high performance ejection of grass clippings, loads grass catcher to capacity quickly. Individual wheel height adjustment.

3.99 GRASS CATCHER ONLY 99¢

DELUXE ALUMINUM WEB CHAIR

5.44

Our regular 6.44

7 webs across, non-tip legs, extra high back. Extra-sturdy construction. Plastic arms match chair webbing.

PRICE CUT \$1.00



DELUXE 9 WEB FOLDING ALUMINUM CHAIR

9.88

Our regular 11.97

Non-tip legs, 9 webs across, extra long 76" five position adjustment. Extra full size for added comfort. Plastic arms match the colorful webbing.

PRICE CUT 2.09



CHINTZ OR QUILTED JUMBO GARMENT BAGS

2.44

Holds Up To 16 Garments

Compare at 3.49

In floral chintz or quilted with Greek key design. Matching, heavy vinyl sides. Strong 3-hook frame.



GRAND WAY BRAND PARA NUGGETS OR CRYSTALS

5 lbs. 99c
 Our regular 1.29

Complete moth protection for winter clothes, blankets, more.

SAVE CLOSET SPACE AND CASH!

MULTIPLE 84¢ SKIRT RACK

Holds up to 10 skirts. Hook on feature saves space. **69c**

JUMBO 2.49 CHESTS **1.88**

Easy storage in both sizes.

FIVE DRAWER 6.99 CHESTS **5.55**

Choice of high or low styles.

1.29 COAT AND SUIT HANGERS **79c**

Natural finish hardwood. - Set of 2

VERSATILE \$1 SKIRT HANGERS **69c**

3 Hangers for

PLASTIC 69¢ DRESS HANGERS **47c**

Notched shoulder blades. Set of 8

WOOD 1.29 SKIRT HANGERS **79c**

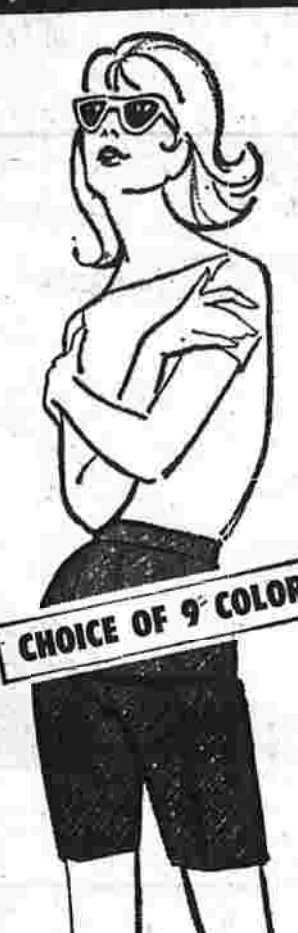
Natural finish hardwood. - Set of 3

FOLD AWAY 1.49 GARMENT HOOK **99c**

Comes with para crystals.

8.99 CLOTHES RACK WITH CASTERS **4.99**

Rolls on 2 wheels, - 38" wide

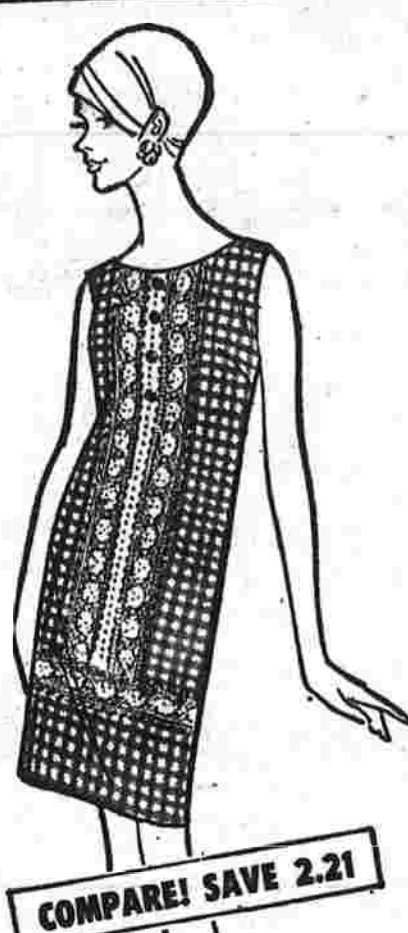


CHOICE OF 9 COLORS!

MISSSES' WANTED STRETCH DENIM JAMAICA SHORTS

1.69

Compare at 1.99
 Neat and trim, with side zipper, and set-on waistband. Sizes 8-18, Assorted colors.

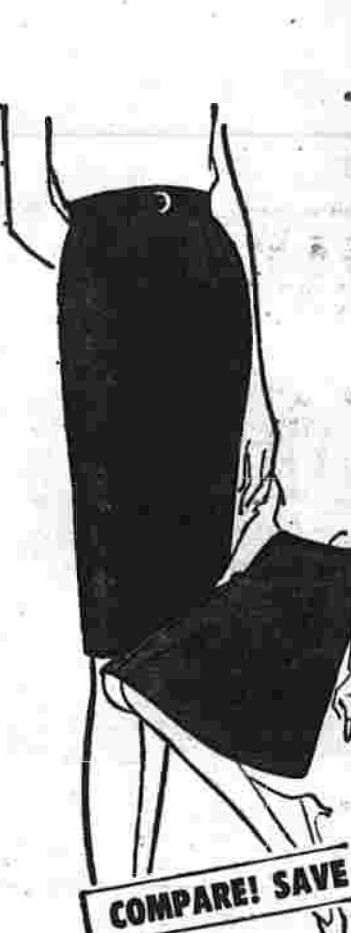


COMPARE! SAVE 2.21

JUNIORS AND JUNIOR PETTITES! SHIFT DRESSES!

4.77

Compare at 6.98
 Pink, blue, or green checks, generously lavished with lace trims. Cool, sleeveless Dacron® polyester-cotton or acetate-cotton. Sizes 7 to 15, and 5 to 11.



COMPARE! SAVE

SOLIDS! PRINTS! MISSSES' SKIRTS AND CULOTTES

2.44

Compare at 3.99
 Make variety the spice of your skirt-life! Look-like-skirt culottes, A-line, double action and flip skirt styles. In Dacron® polyester - cotton, some with belts. Sizes 8-16.



GENERAL ELECTRIC COFFEE MAKER

9.88

4-8 cup capacity with adjustable brew selector. Automatically keeps coffee warm after completed brewing cycle.



MIXMASTER HAND MIXER

7.88

Thumb speed control, on-off switch, beater ejector, large, full-mix beaters.



PRESTO TEFLON® FRY PAN!

14.88

Comes with cover and control master. Cover converts pan to roaster and server.



GENERAL ELECTRIC PORTABLE RADIO

21.88

Short Wave, FM, AM. 12 transistor chassis, extra-sensitive receiving circuits, heavy magnet speaker.

MANCHESTER MIDDLE TURNPIKE WEST Open Mon. thru Sat. 9:30 A.M. to 9 P.M.

Just say "CHARGE-IT" at Grand Way!

RECORD SAVINGS



PRICES CUT TO OUR LOWEST EVER ON THESE BEST SELLING ALBUMS

THE MAMAS AND PAPAS DELIVER OR I'LL TAKE CARE OF YOUR CARES...FRANKIE LAINE
 EACH HI-FI **1.79**
 Our regular 2.79

YARDBIRDS GREATEST HITS ON EPIC...YARDBIRDS
 EACH HI-FI **1.79**
 Our regular 2.79

BORN FREE, ANDY WILLIAMS OR BY REQUEST, JIM NABORS
 EACH HI-FI **1.79**
 STEREO... 218 Our regular 2.79

THE BEST OF EDDY ARNOLD ON RCA
 EACH HI-FI **1.79**
 STEREO... 218 Our regular 2.79

THE BEST OF THE LOVIN' SPOONFUL
 PRICE CUT \$1.00

THE BEST OF THE LOVIN' SPOONFUL
 EACH HI-FI **1.79**
 Our regular 2.79

OUR REGULAR LOW, LOW PRICE... 2.79

1.79

HAPPY TOGETHER ON THE WHITE WHALE LABEL, THE TURTLES
 PRICE CUT \$1.00

THE TURTLES
 EACH HI-FI **1.79**
 Our regular 2.79

REVENGE, BILL COSBY OR HAPPINESS IS, DEAN MARTIN
 PRICE CUT \$1.00

REVENGE, BILL COSBY OR HAPPINESS IS, DEAN MARTIN
 EACH HI-FI **1.79**
 Our regular 2.79

GOLDEN HITS THE SMOTHER BROTHERS, ON MERCURY
 PRICE CUT \$1.00

GOLDEN HITS THE SMOTHER BROTHERS, ON MERCURY
 EACH HI-FI **1.79**
 Our regular 2.79

GOODTIME (SOUNDTRACK) ON ATCO, SONNY AND CHER
 PRICE CUT \$1.00

GOODTIME (SOUNDTRACK) ON ATCO, SONNY AND CHER
 EACH HI-FI **1.79**
 Our regular 2.79

TOO MUCH, LOU RAWLS ON THE CAPITAL LABEL
 PRICE CUT \$1.00

TOO MUCH, LOU RAWLS ON THE CAPITAL LABEL
 EACH HI-FI **1.79**
 Our regular 2.79

FAMOUS DEPENDABLE BRANDS FOR YOUR HOME!

PRESTO DELUXE SPRAY AND STEAM IRON

17.99

Stems longer, holds more water. Wide range of settings for all fabrics including wash and wear and synthetics.

GENERAL ELECTRIC ALL TRANSISTOR MINIATURE CLOCK RADIO

22.88

Snooze alarm, touch the bar on top and alarm shuts off for about 10 minutes and then goes off again.

OSTER TWO SPEED PUSH BUTTON BLENDER

24.88

Chops, grinds, purees, mixes, grates, liquifies and blends at the flick of a switch. 64 page recipe book included.

GENERAL ELECTRIC STEAM AND DRY IRON

7.88

Switches from steam to dry at the push of a button. Automatic fabric dial. Lightweight, only 3 pounds.

GENERAL ELECTRIC ELECTRIC SLICING KNIFE

8.88

Stainless steel blades for long life sharpness. Positive snap in blade lock. Full one year guarantee.

RIVAL AUTOMATIC CAN OPENER AND KNIFE SHARPENER

10.88

Opens every size or shape can automatically. Sharpens knives to factory keen edge. Cord storage.



Class President

Gary L. Heard, son of Mr. and Mrs. Louis F. Heard of 281 Henry St., was recently elected president of the sophomore class at Upsala College, East Orange, N.J. Miss Arline LaPenta, daughter of Mr. and Mrs. Nicholas LaPenta of 66 Wedgewood Dr., was elected vice president.

Heard, a 1966 graduate of Manchester High School, was a member of the Round Table Singers, the varsity baseball team, and the junior varsity soccer team. At college, he is a member of the Upsala Choir and Theta Xi fraternity.

Miss LaPenta, also a 1966 graduate of Manchester High School, was a member of the Round Table Singers and co-leader of the school's yearbook. During the summer of 1966, she was an American Field Service exchange student in Peru. She received the 1966 Madeline H. Mitchell Memorial Scholarship. She is in the honors program at college, and is a member of the Upsala Choir, and Phi Omega Chi society.

Area Weather

WINDSOR LOCKS (AP) - Except for some variable cloudiness over eastern sections this morning it will be mostly sunny today over New England, the U.S. Weather Bureau reports. Temperatures this afternoon should climb to near the 70-degree mark over inland areas of southwestern New England. Along the Connecticut shore the mercury will hold in the mid to low 60s.

The early morning weather map shows a low pressure system north of the Delaware that is moving rather rapidly eastward. It will be located over the St. Lawrence Valley Friday noon. This will result in a period of considerable cloudiness Friday with continued fairly mild temperatures.

The likelihood of showers will be on the increase Friday afternoon. Fair weather should return by Saturday and the outlook is for a good weekend.

MICHAELS TREASURE CHEST DIAMONDS

Best quality available in all shapes and sizes

Treasure Chest Diamonds, from \$100 to \$5000

EASY PAYMENTS AVAILABLE

Michaels
 JEWELERS-SILVERSMITHS
 Downtown Main St.
 Manchester

18 MAY 18

Vernon

Renewal Work Hits Problems—Rocks

Rockville has rocks and they are almost atop the Vernon Redevelopment project work of preparing the site in the center of Rockville. Thick and hard ledge was struck this week by the Thomas C. DeLuca Construction Company of Willimantic while it was laying drainage pipe about six feet under Main St. near Market St. Only one 20-foot length of pipe was laid in the past week, according to Mrs. Betty Lou Williams, assistant executive director of the agency. She reported on the trouble at last night's Vernon Redevelopment Commission meeting. DeLuca told the agency, "This cost you money." An air-type jackhammer has been used with little success on the rock. Today a "new method" will be used. It was not divulged because of the nearness of other service lines in the road, blasting cannot be used, Mrs. Williams said. An engineer with the Cahin Engineering firm in New Haven, John Hines, once told the commission that no rock was "anticipated" along this section of Main St. Test borings supposedly proved it. "They couldn't have missed it all by that much," exclaimed Joseph Novak, commission member. Lester J. Baum, commission chairman, said he would look into the extent of the problem. A test boring about 25 feet ahead of the present work might find no more rock, he suggested. Baum said he would contact Hines, the engineer. Without the pipe laid, final surfacing and sidewalks cannot be put in, according to Mrs. Williams. Completing the land preparation "fall hinges on getting the drainage in," she said. But other problems face the commission. No developer has offered a proposal for the whole project. Despite the fact the courthouse hill to put a Tolland County Superior Court building costing about \$125,000 is now waiting only for Gov. John M. Dempsey's signature, developers are not submitting plans for the whole project as expected. "Baum said, "The only reason

flowers, seedlings, houseplants and vegetables. In Reading Program Mrs. Peggy Cobb of 14 Mt. Vernon Dr. is one of 27 teachers to attend an intensive, six-week institute, designed to help meet the growing demand for trained reading specialists. It will be at the University of Connecticut campus this summer. During the June 24 to August 15 "Institute for Advanced Study in Reading," participants will get practical and supervised experience with youngsters afflicted with reading problems. They will also receive seven graduate credits. Discharged Tuesday: Thomas Westbrook of 122 Crestbridge p.m. in all areas except water. Dr. Christine Conner of 10 Cotuit where they are 2 to 4 and High St.; Linda Brewster of 98 Karlson of 665 Dart Hill Rd.; St. Mrs. Judith Smith and son Stella Goham of West St.; of 48 Allen Dr. Kathleen Galko of 144 East Main St.; Temperance Gagey of Pineapple Rd.; Ellington; Rose DeWitt of Goose Lane, Tolland; Patricia Assolino of Charter Rd.; David Bolton of 29 Laurel St. Admitted Tuesday: James Robbins of RFD 2; Edward Gesay of 8 Louis St.; Heidi Horsa-1480 a year for food. About a man of Buffalo Rd., Tolland; third of that is meat.

W. G. Glenney We've got it! The grass seed with "WEATHER INSURANCE"™ Ever planted grass seed and had it washed away? Or baked? Or frozen? It's frustrating. But now, when you plant new WINDSOR, the improved variety of Kentucky Bluegrass, Scotts takes all the weather risks (see below). They can do this because Windsor is tough-rooted and ultra-sturdy. Handsome, too. For making a new lawn or upgrading an old one. Now available in new Scotts BLEND SEVENTY. 1,000 sq. ft. 4.45... 2,500 sq. ft. 9.95

Windsor If for any reason you are not pleased with your Windsor seedling, simply send the sales slip for the seed to Scotts, Marysville, Ohio, 43040—and they'll mail you a refund check promptly.

HERE IT IS AMERICA'S MOST POPULAR LAWN FERTILIZER 5,000 Sq. Ft. \$4.95 10,000 Sq. Ft. \$8.95 \$8 off Sturdy steel spreader has dial-a-matic rate setting. Full 26-inch spreading width. New rust-resistant finish. Alone \$28.95—18.95 with any Scotts product. QUALITY—THE BEST ECONOMY OF ALL

SHOP FRI. TO SAT. 8:30 P.M. TO NOON THE W.G. GLENNEY CO. 336 NORTH MAIN ST.—649-5253

vicky vaughn Jr. petite The shape that really swings... to-the-body flipper. Note the no-sleeves, the square neck, the brightly embroidered bands and buttons. A Vicky Vaughn Petite in crisp, fresh-staying Whippet Twill of Dacron/Cotton. White top with pink, orange, green or yellow skirt. 3P-13P. 14.98 Poise 'N' Ivy Shoppe Pre-teen, teens, juniors. 698 TALCOTTVILLE AVE. RT. 83—VERNON, CONN. 875-6444

Check and Compare Our Fine MEATS USDA CHOICE PORTER HOUSE STEAKS 95¢ SIRLOIN STEAKS 89¢ SWIFTS PREMIUM SMOKED HAM BUTT PORTION 45¢ SHANK PORTION 55¢ SWIFTS PREMIUM SKINLESS FRANKS 59¢

Fresh Produce FANCY WHITE MUSHROOMS 59¢ RIPE PINK MEATED GANTALOUPE 29¢ FIRM RIPE BANANAS 2 lbs. 29¢ WASHED & CLEANED TENDER SPINACH CELLO PKG. 23¢ KLEENEX FACIAL TISSUES 4 89¢ SWEET LIFE BLEACH Gal. 39¢ SWEET LIFE FRUIT COCKTAIL 4 89¢

HEALTH & BEAUTY AIDS GREST TOOTH PASTE Family Size Reg. 95c Size 75c SECRET ROLL-ON Reg. \$1.00 Size 75c PRELL CONCENTRATE SHAMPOO Reg. \$1.00 Size 75c SUNSHINE OATMEAL COOKIES 14-oz. pkg. 39c

WE RESERVE THE RIGHT TO LIMIT QUANTITIES FIRST FOOD STORE OF MANCHESTER 646 CENTER STREET OPEN WED., THURS., FRI. TILL 9 P.M. — SAT. TILL 6:30 P.M.

Rham District School Aide Resigns for New Position

The Regional Board of Education accepted the resignation of Assistant Principal Richard Babcock at Monday night's meeting. Babcock, who has been assistant principal at Rham High School since December, plans to return to the Ellington school system where he was previously employed. His resignation is effective Aug. 15. Superintendent Aram Damarjian was authorized to announce the assistant principal vacancy and to receive applications for the position. After screening applicants, Damarjian is to recommend an appointment to the Board. Four other resignations were accepted during Monday's meeting. Dwight Martin, industrial arts teacher since the school opened in 1967 in leaving at the end of the current school year to join the industrial arts department in the Colchester School system. Jon Massaro, mathematics teacher, has resigned effective June 30 to accept a teaching position in Wethersfield. The other two resignations, also effective in June, are Mrs. Lorraine Hoes, part-time home economics teacher and Lloyd Odoon, junior high science teacher. These resignations bring the staff vacancies to eight full-time and one part-time position plus that of the assistant principal. The vacancies are two mathematics, one girls' physical education, two reading, two industrial arts, one junior high science and one part-time home economics position. The superintendent is authorized to fill the staff vacancies. The board approved the appointment of Mrs. Kathleen Ruppert to the position of art teacher at Wethersfield to the new part-time position in art. She is a 1963 graduate of the Rhode Island School of Design with a bachelor's degree in fine arts. Mrs. Russo will teach for a half day at Rham and two and a half days in Andover each week. The board's personnel policies committee will meet with the teachers' personnel committee Monday night in an effort to negotiate differences in the two groups' proposals for salary and other working conditions. No agreement was reached at a mediation meeting with the State Department of Education representatives last month. If agreement cannot be reached in local negotiations, the problems will be submitted to arbitration for the second consecutive year. On May 29, a special meeting is scheduled by the board with representatives of Bitterfield and Associates, the architect's engaged for the proposed expansion program at Rham.

the OLD Weldon Drug Co. at their new address: 767 MAIN ST. Parking in Birch St. Parking Lot

NEED A SPECIAL CAR FOR A SPECIAL OCCASION? Rent a new 'Camaro' or Mercury. Low Rates... Daily... Weekly... Monthly.

RESERVE A CAR NOW... CALL 643-5135 LEASING One-Three Year Leasing Plans All Makes and Models MORIARTY BROTHERS "Connecticut's Oldest Lincoln-Mercury Dealer" 801 CENTER STREET OPEN EVENINGS

OUR GREAT SAVINGS EVENT! KING'S Self-Service Department Store KING'S DAYS Tremendous Savings in Every Dept! Hundreds More Like These! Summer Needs for Family and Home at Low Discount Prices!

Boys' 10-oz. Coarse Weave Dungarees \$1 Boys' Fine Combed Cotton Polos 2 for \$1 Men's Short Sleeve Sport Shirts 1.54 Men's Ban-Lon and Orlon and Nylon Hose 36¢ Infants', Toddlers', Little Girls' Playwear 88¢ Girls' Adorable Dresses, Tents, Shirts 1.46 Tot's 2-Piece No-Iron Sleepers 78¢ Toddler's Plastic Panties 9¢ 2-Piece Jamaica Sets 1.54 Nylon Stretch Shells 1.99 Ladies' Tailored Shirts \$1 SKIRTS for your active life! \$2 Combed Cotton Panties 28¢ Half Slips! Pettipants! Play Briefs! Bras! 68¢ Misses' and Children's Sandals 1.37 Sailcloth Casuals for Women and Teens 97¢ Boys' Hi-Cut Sneakers 1.44 Jumbo Size Garment Bags \$1 Heavy Gauge Aluminumware 88¢ 2-Gallon Plastic Sprinkler Can 88¢ 2 1/4-Bushel Plastic Clothes Basket \$1 22-Gallon Plastic Barrel with Cover 1.99 19" High Metal Patio Table \$1 Folding Metal Drop Leaf Table 5.99 72x90 Chatham Blankets 2 for \$5 Cannon Towel Ensembles 68¢ Famous DuPont Lucite House Paint 5.57 Gulton Rechargeable Flashlights 3.99 30-Cup Automatic Percolator 7.96 Roto-Broil Automatic Cooker-Fryer 5.99 Proctor-Silex Steam-Dry Iron 6.90 Q-Tips Cotton Balls (130) 26¢ Blanchards Summer Cologne 48¢ Royal Bath Aids 32-oz. 47¢

Town Resident Learns Son Killed in Vietnam Action

Army Sp. 4 Michael Roy Wilcox, 18-year-old son of Mrs. Ruth Wilcox, 181 Main St., Manchester and Bert Wilson, Los Angeles, Calif., was killed in action during combat action in the Mekong Delta region south of Saigon, his mother reported today.

No Report On Fate of Trapped Unit

Although the daily communiqués reported only minor damage to the camp, AP correspondent George Esper, who was in the area when the unit was captured, said the unit was burning furiously after the shelling. He said the unit was captured in the area of the camp, but he was unable to determine its fate.

Obituary

Edward Schneider, 71, of 14 West St., Rockville, died yesterday at Memorial Hospital. Mr. Schneider was born Nov. 11, 1895 in Ellington, a son of Alfred and Rosina Hanf Schneider, and lived in the Christian Church of Ellington, Conn. Survivors include his wife, Edna, a daughter, Mrs. Joseph Schneider, Mrs. Joseph Schneider, Mrs. Joseph Schneider, and several grandchildren.

TSU Gets Tough, South Windsor Complaints on Town Meeting

Complaints on the water service and water quality in South Windsor were aired at last night's town meeting. The town manager, William Williams, said that the town is taking steps to improve the water service and quality.

Dodd Asks More Time For Defense

Mike Mansfield, D-Mont., and Majority Leader Everett M. Dirksen, R-Ill., told Long that they would resist any postponement of the vote.

Legislative Roundup

Bill to Change Vote Age Seen Dying in Committee

HARTFORD (AP) — A bill that would lower the voting age to 18 is doomed unless Democrats in the House support it, a legislative aide said today.

CLAUDE Furniture Values at Great Savings! Complete Bunk Beds Use as twin beds \$88. 4 Pc. Hollywood Bed with 220 Coil Mattress \$68. 6" Firestone Foam Mattress & Box Spring \$46.

Circuit Court, Manchester Presiding Judge Favors Advice from Youth Juries

In Circuit Court 12, Manchester this morning many decisions involving youth were made, and Judge Frank Monahan said he favors a youth jury "so that we could find out what the viewpoint of the kids is on these cases."

Armed Escapes Recaptured by Maryland Police

Two armed escapees from a Baltimore prison were recaptured by Maryland police. The escapees had fled from the prison in Baltimore and were caught in Maryland.

Machine Taken, Car Recovered

Police report the recovery of a 1965 Ford Mustang stolen car in North Adams St. The car was recovered after a search in the area.

Bicyclist Hurt, Hits Automobile

Mark L. Sheehan, 13, of 150 W. Main St., was injured in an accident involving his bicycle and a car. The accident occurred on W. Main St.

Police Arrests

Police arrested several individuals in Manchester. The arrests were made during a routine patrol.

Funerals

Funerals were held for several individuals in Manchester. The services were held at local churches.

Senate Prober Says Wasted Equipment in Viet Worth About \$100 Million

Senator J. Bennett Johnston said that the United States has wasted about \$100 million worth of equipment in Vietnam. He said that the equipment was not used effectively.

CLAUDE Furniture Values at Great Savings! Complete Bunk Beds Use as twin beds \$88. 4 Pc. Hollywood Bed with 220 Coil Mattress \$68. 6" Firestone Foam Mattress & Box Spring \$46.

Police Arrests

Police arrested several individuals in Manchester. The arrests were made during a routine patrol.

Funerals

Funerals were held for several individuals in Manchester. The services were held at local churches.

Police Arrests

Police arrested several individuals in Manchester. The arrests were made during a routine patrol.

Funerals

Funerals were held for several individuals in Manchester. The services were held at local churches.

Police Arrests

Police arrested several individuals in Manchester. The arrests were made during a routine patrol.

Funerals

Funerals were held for several individuals in Manchester. The services were held at local churches.

Police Arrests

Police arrested several individuals in Manchester. The arrests were made during a routine patrol.

CLAUDE Furniture Values at Great Savings! Complete Bunk Beds Use as twin beds \$88. 4 Pc. Hollywood Bed with 220 Coil Mattress \$68. 6" Firestone Foam Mattress & Box Spring \$46.

Police Arrests

Police arrested several individuals in Manchester. The arrests were made during a routine patrol.

Funerals

Funerals were held for several individuals in Manchester. The services were held at local churches.

Police Arrests

Police arrested several individuals in Manchester. The arrests were made during a routine patrol.

Funerals

Funerals were held for several individuals in Manchester. The services were held at local churches.

Police Arrests

Police arrested several individuals in Manchester. The arrests were made during a routine patrol.

Funerals

Funerals were held for several individuals in Manchester. The services were held at local churches.

Police Arrests

Police arrested several individuals in Manchester. The arrests were made during a routine patrol.

Open Stock Maple Finish Bedroom Pcs. Plastic Tops \$39. 5 Pc. Dinette Set - Choice of Tops and Finishes \$38. 7 Pc. Extension Dinette Set Choice Of Tops And Finishes \$58.

Police Arrests

Police arrested several individuals in Manchester. The arrests were made during a routine patrol.

Funerals

Funerals were held for several individuals in Manchester. The services were held at local churches.

Police Arrests

Police arrested several individuals in Manchester. The arrests were made during a routine patrol.

Funerals

Funerals were held for several individuals in Manchester. The services were held at local churches.

Police Arrests

Police arrested several individuals in Manchester. The arrests were made during a routine patrol.

Funerals

Funerals were held for several individuals in Manchester. The services were held at local churches.

Police Arrests

Police arrested several individuals in Manchester. The arrests were made during a routine patrol.

CLAUDE Furniture Values at Great Savings! Complete Bunk Beds Use as twin beds \$88. 4 Pc. Hollywood Bed with 220 Coil Mattress \$68. 6" Firestone Foam Mattress & Box Spring \$46.

Police Arrests

Police arrested several individuals in Manchester. The arrests were made during a routine patrol.

Funerals

Funerals were held for several individuals in Manchester. The services were held at local churches.

Police Arrests

Police arrested several individuals in Manchester. The arrests were made during a routine patrol.

Funerals

Funerals were held for several individuals in Manchester. The services were held at local churches.

Police Arrests

Police arrested several individuals in Manchester. The arrests were made during a routine patrol.

Funerals

Funerals were held for several individuals in Manchester. The services were held at local churches.

Police Arrests

Police arrested several individuals in Manchester. The arrests were made during a routine patrol.

CLAUDE Furniture Values at Great Savings! Complete Bunk Beds Use as twin beds \$88. 4 Pc. Hollywood Bed with 220 Coil Mattress \$68. 6" Firestone Foam Mattress & Box Spring \$46.

Police Arrests

Police arrested several individuals in Manchester. The arrests were made during a routine patrol.

Funerals

Funerals were held for several individuals in Manchester. The services were held at local churches.

Police Arrests

Police arrested several individuals in Manchester. The arrests were made during a routine patrol.

Funerals

Funerals were held for several individuals in Manchester. The services were held at local churches.

Police Arrests

Police arrested several individuals in Manchester. The arrests were made during a routine patrol.

Funerals

Funerals were held for several individuals in Manchester. The services were held at local churches.

Police Arrests

Police arrested several individuals in Manchester. The arrests were made during a routine patrol.

CLAUDE Furniture Values at Great Savings! Complete Bunk Beds Use as twin beds \$88. 4 Pc. Hollywood Bed with 220 Coil Mattress \$68. 6" Firestone Foam Mattress & Box Spring \$46.

Police Arrests

Police arrested several individuals in Manchester. The arrests were made during a routine patrol.

Funerals

Funerals were held for several individuals in Manchester. The services were held at local churches.

Police Arrests

Police arrested several individuals in Manchester. The arrests were made during a routine patrol.

Funerals

Funerals were held for several individuals in Manchester. The services were held at local churches.

Police Arrests

Police arrested several individuals in Manchester. The arrests were made during a routine patrol.

Funerals

Funerals were held for several individuals in Manchester. The services were held at local churches.

Police Arrests

Police arrested several individuals in Manchester. The arrests were made during a routine patrol.



Misses Cotton KNIT TOPS

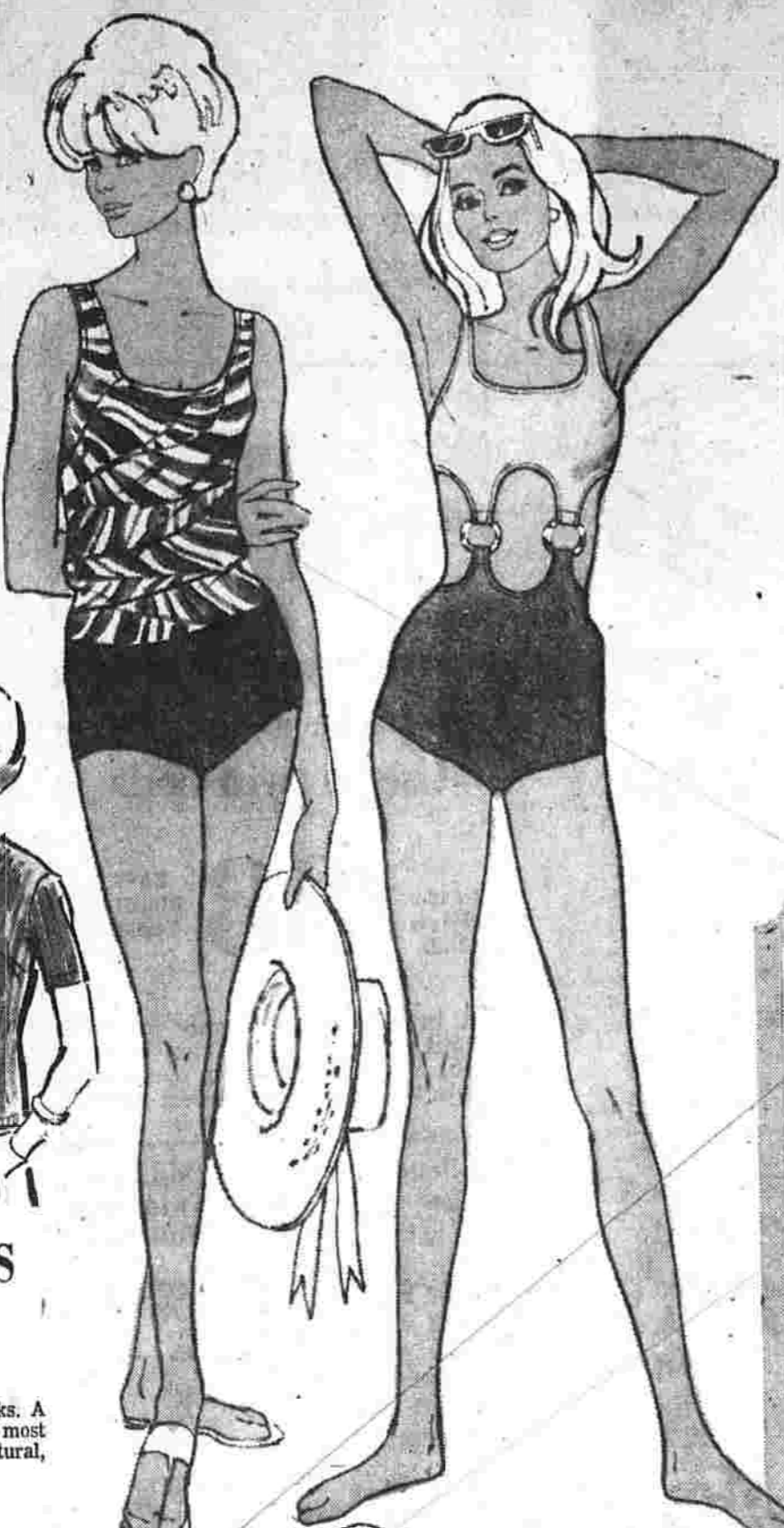
Comp. Value 1.99 3.98

100% Double Knit Cotton Skinny Rib Tops. Sleeveless Mock Turtle with back zipper—the crew neck with short sleeves. White and Seasons Fashion Colors. Sizes S-M-L.

MISSSES SLACKS

Comp. Value 2.44 3.98

Special grouping of Misses Slacks. A large assortment of seasons most wanted fabrics. Maize, Navy, Natural, Orange in others.



A Great Collection Of The Season's Fine Fashions In

SWIM SUITS

From Famous Makers

The 2 pc. Blouson in Print Combination

Comp. Value 14.95 8.97

Two-tone Ring A Ding Style

Comp. Value 20.00 14.97

Many Others 1, 2 & 3 pc. Styles from 7.59 to 19.97 Sizes 32 to 44

Suddenly It's Sandal Time HANDCRAFTED IN ITALY

Women's and teens sandals with all leather uppers and quality leather soles. Full foam cushioned. Sizes 5 to 10.

- A. Stripping cross-band with natural rope instep trim. Village brown or Suntan. Comp. Value 3.95 2.97
B. Halter back thong in soft glove leather. White, Black, Taupe, Yellow. Comp. Value 4.95 3.47
C. Glove leather tri-band T Strap with mesh covered heel. White, Brown, Natural. Comp. Value 5.95 4.97



Shop Caldor for a Complete Selection of Italian Sandals for the Entire Family



Girls' 2pc. JAMAICA SUITS

Comp. Value 5.00 2.88

Jacket & shirt styles with matching Jamaica shorts. Prints—striped and paisley combination. Sizes 7-14.

PLAY & TENNIS DRESSES with Matching Pants

Comp. Value 2.99 1.77

Two piece shortie dresses with matching pants—floral prints, checks and solid colors—applique and schiffli embroidered trims. Toddlers 2-4. Girls 3-6X—Girls 7-14



Boys' UNLINED NYLON ZIPPERED JACKETS

Comp. Value 4.98 2.99

Oxford & Plain, Mandarin collar, zipper pocket, colors: blue, white, gold & black. Sizes 8-18

Boys' PERMANENT PRESS SPORT SHIRTS

Comp. Value 4.95 1.66

A group of boys sport shirts in woven plaids, striped and paisley. Flat Pack Ivy Styles. Sizes 8-18

Boys' Double Terry Robes

Comp. Value 5.98 3.33

Double terry robes in gay blue & gold stripes with self belt and pocket. Sizes 8 to 18



Men's STRIPED CREWNECK KNIT SHIRTS

Comp. Value 4.00 2.69

'67 Fashion First. Group includes full combed cottons in crew and hi-crow. In every wanted colorful stripe, blazer, with side-vent. Sizes S-M-L-XL.

Men's 'Never Iron' Slacks

Comp. Value 7.95 4.99

Tropical Koratron® processed 65% Dacron® Polyester, 35% cotton poplin. Well tailored, plain front & red-cuffed. Relaxed crisp, neat appearance washing after washing. Colors: tan, olive & black. Sizes 30-42.



Repeat of a Sellout! Men's GOLF & BOATING JACKETS

Comp. Value 9.95 5.97

Tremendous group of super-values. National Maker. Zip-fronts & popover styles, exactly trimmed with competition stripes & corded fronts, zip-pockets & zip-in hoods. Every wanted color. Sizes S-M-L-XL.

Case Mt. Purchase Unlikely by State

The chances are dim for state acquisition of Manchester's Case Mt. now and for several years to come, was the word given last night to a slim audience of about 30 persons attending a panel discussion on "Open Spaces."

The meeting was at the Senior Citizens Center and the 30 who attended were mostly members of town agencies, of the Chamber of Commerce and of the League of Women Voters. They included the three panelists and four unaffiliated observers.

On the subject of a federal grant for the acquisition (the SAVE! Our low overhead (no rent or employee) means you really SAVE 30% - 50% on the finest quality NEW FURNITURE For Savings, Service and Satisfaction. Without High Pressure Salesmanship. See Us Today. Le Blanc Furniture Co. Open Daily 9 to 6 - Sat. 9-5 195 South St., Rockville

people pollute the reservoir. He said that it would be more practical to clean up presently polluted areas, such as Laurel Lake, for recreation use than to endanger the water system. Otte, at this point, said that a sampling of the state's population produced an overwhelming response in favor of water-based recreation.

He said that Connecticut, one of the few states in the country blessed with adequate rain over a period of years, has not even begun to take advantage of its available water supplies. Percy, reading from the CRPA "Open Space Plan," listed the recreation acreage needs for the region to the year 1990.

On the subject of a federal grant for the acquisition (the SAVE! Our low overhead (no rent or employee) means you really SAVE 30% - 50% on the finest quality NEW FURNITURE For Savings, Service and Satisfaction. Without High Pressure Salesmanship. See Us Today. Le Blanc Furniture Co. Open Daily 9 to 6 - Sat. 9-5 195 South St., Rockville



Globe School Ground Broken

Mayor Nathan Agostini, left, and school board chairman Alky John S. G. Rottner, right, shared the honors today at ground-breaking ceremonies for the new \$1 million Globe Hollow School, off Dartmouth Rd. and south of Spring St. Looking on from left to right, are Town Manager Robert Weiss, Superintendent of Schools William Curtis, and Orlando Aronson, who will build the facility. The 12-classroom school of 32,000 square feet was designed by Manchester architect Richard Manley. Annual calls for completion of the school within 300 days of start of construction. School of 32,000 square feet was designed by Manchester architect Richard Manley. Annual calls for completion of the school within 300 days of start of construction. School of 32,000 square feet was designed by Manchester architect Richard Manley. Annual calls for completion of the school within 300 days of start of construction.

James S. Klar, assistant managing director of the Connecticut Development Commission, has been named the Distinguished Services Award Winner for 1967 by the New England Chapter of the American Institute of Planners. Klar, the second person to receive this award, was honored last night at a chapter dinner in Waltham, Mass. He was cited as pioneer, leader and innovator in the field of state governmental planning. He has been assistant managing director of the Development Commission since 1962.

Girl Screams, Escapes Grip Of Masked Housebreaker

A housebreaker wearing a stocking mask grabbed a 15-year-old girl by the neck inside her Birch St. home last night as she walked from the living room to her bedroom. The girl managed to scream twice for her father and the prowler ran out the front door and escaped, police said. The father, Barclay Brug of 108 Birch St., told police he was walking into the bedroom about 10:45 when he saw a man after the man, described as about 6 feet tall, but he escaped. Police discovered a pair of shoes on the ground under an unlocked window through which the prowler apparently entered the home. Police are investigating the Brug said the shoes did not incident.

Two Girls Find Stolen Purse

A pocketbook and its contents, stolen yesterday from an employee of House and Hale Department store while she was working, were discovered by two girls shortly afterward at Main and Locust Sts. Police said the pocketbook containing \$25 in cash and personal effects was stolen from Lorraine Leonard of 73 Mountain Rd. sometime between 1:30 and 2:45 p.m. The pocketbook, with \$15 in products with \$15 in cash and personal effects was stolen from Lorraine Leonard of 73 Mountain Rd. sometime between 1:30 and 2:45 p.m. The pocketbook, with \$15 in products with \$15 in cash and personal effects was stolen from Lorraine Leonard of 73 Mountain Rd. sometime between 1:30 and 2:45 p.m.

Disposable Gowns, Needles MOUNT VERNON, N. Y. — American doctors and nurses threw away about \$125 million worth of disposable gowns, needles and syringes, items used once and thrown away in a trash container at a waste incineration plant in Mount Vernon, N. Y. The figure is the estimated amount of the medical disposable products market.

TERMITES Swarming - call BLISS BE HURE... BLISS has been serving the Home Owner for 88 YEARS. For a Complete FREE INSPECTION of your home by a Termite Control Expert, supervised by the finest technical staff, phone our nearest local office: 649-9240 BLISS 1887 BLISS TERMITE CONTROL CORP. DIV. OF BLISS EXTERMINATOR CO., INC. - EST. 1882 The Oldest and Largest in Conn.

25¢ REWARD on new Soft Parkay Corn Oil Margarine Kraft will send you 25¢ when you buy a pound! Now there's another Soft Parkay. This one with 100% corn oil goodness—high in polyunsaturates. Made with soft, spread that light, delicate Soft Parkay flavor smoothly, evenly right from the refrigerator. In handsome, ready-to-serve cups. Re-sealable lids lock freshness in, keep odors out. Soft Parkay Corn Oil Margarine—right from Kraft. MARGARINE SOFT PARKAY CORN OIL MARGARINE

Village Bootery Spring Sale A Large Selection Of WOMEN'S and CHILDREN'S FAMOUS BRAND SHOES AT TREMENDOUS SAVINGS. CHOOSE FROM NATURALIZER, JOYCE, AMERICANA, ARPEGGIO, JUMPING JACKS AND MANY OTHERS. COME EARLY FOR BEST SELECTION OF PATTERNS AND SIZES. OPEN MON., TUES., WED.—10 A.M. till 6 P.M. THURS., FRI. till 9 P.M.—SAT. 9:30-5:30 ROUTE 83, TALCOTTVILLE—OPPOSITE CONN. GOLFLAND

CALDOR Where Shopping is Always a Pleasure MANCHESTER — 1145 TOLLAND TURNPIKE EXIT 93, WILBUR CROSS PARKWAY SALE: THURS. thru SAT. Open Late Every Night

18 MAY 1967

Vernon Mayor Helps Scout Touch Up Center

The mayor and a boy scout worked together this afternoon in Rockville Center in part of the Rockville Area Chamber of Commerce sponsored Clean-up, Paint-up, Fix-up Week.

BERRY'S WORLD



"I just want to say that I saw your TV ad, tried your mouthwash and..."

Tolland Development Commission Is Town Promotion Agency

The Economic Development Commission is the official promotional agency for the town, according to John Lange, Community Services Agent for the State Development Commission.

New England's Leading Two-Year Professional School of ACCOUNTING

Applications now being accepted for Sept. 1967, admission. HARTFORD INSTITUTE OF ACCOUNTING 66 Forest St., Hartford—Tel. 247-1115

KINGS SELF-SERVICE DEPT STORE

BROAD STREET, MANCHESTER Pet Shop Specials!

THURS., FRI. and SAT. 19c EACH! 19c EACH! 19c EACH! Black Mollies, Green Swords, Gold Moons, Marigolds, Red Painted Moons, Regular Guppies, Salt 'n' Pepper Moons, Bunch Plants

Bolton Indians Will Take Part In Girl Scout Program

Senior Girl Scout Troop 605 will present an Indian show to members of the Bolton Indian Club at 8 p.m. at the Community Hall.

Woodland Gardens

Plants That Please, From Grower To You! WREATHS & FLOWERS FOR MEMORIAL DAY

Geraniums 35c - 85c

10 for \$8.00. For the "Do-It-Yourselfers" we have: Potted Geraniums, 35c - 85c; Spikes, 50c - 85c; Dusty Millers, Marigolds, Petunias, etc.

Bedding Plants

Season Special! Only 79c 5 for \$3.75. VEGETABLE PLANTS. Tomatoes, Peppers, Celery, Lettuce, Cabbage, etc. Only 60c. Potted Tomatoes 4 for 95c

Perennials

(Hardy Plants) Our Specialty! 80c 5" Pots - 3 for \$2.00. Petunias, Delphinium, Columbine, Daisies, Pinks, Poppies, Rock Hollyhocks, Lupines, Rock Geraniums and many more. See, we have STRAWBERRY PLANTS!

Woodland Gardens

Your Complete Garden Center! Let us help you with your lawn and garden problems! JOHN & LEON ZAPAKA 643-8474

MIT Planning 'Sister' Role For Wellesley

Massachusetts Institute of Technology, just slightly coarser, MIT in Cambridge and Wellesley in Wellesley are 12 miles apart.

Ph.D. Total to Double

WASHINGTON U. S. schools have almost doubled in the past 10 years the number of doctorates they award.

Service Is Our Business

REFRIGERATION AIR CONDITIONING INDUSTRIAL, COMMERCIAL Water Coolers, Reach-ins, Walk-ins, Freezers.

WANT BIG VALUES? GO GRANTS

Bradford Refrigerators ...with 5-year guarantee. 15.5 CU. FT. REFRIGERATOR DEFROSTS AUTOMATICALLY

NEW Iron Fireman oil furnace

PAYS FOR ITSELF. NO SOOT... NO SMOKE... it just makes HEAT. Guaranteed fuel saving.

W.T. GRANT CO.

MANCHESTER PARKADE. Times change and so does GRANTS, but our basic policy of BIG VALUES has not changed since 1906.

Deadline Nears On Reservations

Reservations close tomorrow for the biennial luncheon and meeting of the Manchester Republican Women's Club.

Tolland Car Getting Tow Slips from Hitch

A car under tow slipped its hitch while a man had stopped to check it and the car traveled across a lane and struck a car driven by a Storm woman.

Population Gains Less

WASHINGTON — The U. S. population in 1966 rose 1.1 per cent compared with an annual rate that hovered between 1.4 and 1.5 per cent during 1967-61, census officials say.

USDA Choice

BRISKET CORNED BEEF 79c lb. HEAD CUT. EXTRA LEAN—FRESHLY GROUND NOT PREPACKAGED. POT PIES 69c. Chuck Ground lb. 79c.

USDA Choice

CHUCK OF BEEF 49c lb. APPROXIMATE CUTS. 4 CHUCK STEAKS 1 SHOULDER CLOD ROAST 4 CHUCK ROASTS 4 LBS. BEEF STEW 6 LONDON BROILS 25 LBS. CHUCK GROUND

USDA Choice

CHUCK OF BEEF 49c lb. APPROXIMATE CUTS. 4 CHUCK STEAKS 1 SHOULDER CLOD ROAST 4 CHUCK ROASTS 4 LBS. BEEF STEW 6 LONDON BROILS 25 LBS. CHUCK GROUND

USDA Choice

CHUCK OF BEEF 49c lb. APPROXIMATE CUTS. 4 CHUCK STEAKS 1 SHOULDER CLOD ROAST 4 CHUCK ROASTS 4 LBS. BEEF STEW 6 LONDON BROILS 25 LBS. CHUCK GROUND

USDA Choice

CHUCK OF BEEF 49c lb. APPROXIMATE CUTS. 4 CHUCK STEAKS 1 SHOULDER CLOD ROAST 4 CHUCK ROASTS 4 LBS. BEEF STEW 6 LONDON BROILS 25 LBS. CHUCK GROUND

USDA Choice

CHUCK OF BEEF 49c lb. APPROXIMATE CUTS. 4 CHUCK STEAKS 1 SHOULDER CLOD ROAST 4 CHUCK ROASTS 4 LBS. BEEF STEW 6 LONDON BROILS 25 LBS. CHUCK GROUND

USDA Choice

CHUCK OF BEEF 49c lb. APPROXIMATE CUTS. 4 CHUCK STEAKS 1 SHOULDER CLOD ROAST 4 CHUCK ROASTS 4 LBS. BEEF STEW 6 LONDON BROILS 25 LBS. CHUCK GROUND

USDA Choice

CHUCK OF BEEF 49c lb. APPROXIMATE CUTS. 4 CHUCK STEAKS 1 SHOULDER CLOD ROAST 4 CHUCK ROASTS 4 LBS. BEEF STEW 6 LONDON BROILS 25 LBS. CHUCK GROUND

USDA Choice

CHUCK OF BEEF 49c lb. APPROXIMATE CUTS. 4 CHUCK STEAKS 1 SHOULDER CLOD ROAST 4 CHUCK ROASTS 4 LBS. BEEF STEW 6 LONDON BROILS 25 LBS. CHUCK GROUND

USDA Choice

CHUCK OF BEEF 49c lb. APPROXIMATE CUTS. 4 CHUCK STEAKS 1 SHOULDER CLOD ROAST 4 CHUCK ROASTS 4 LBS. BEEF STEW 6 LONDON BROILS 25 LBS. CHUCK GROUND

USDA Choice

CHUCK OF BEEF 49c lb. APPROXIMATE CUTS. 4 CHUCK STEAKS 1 SHOULDER CLOD ROAST 4 CHUCK ROASTS 4 LBS. BEEF STEW 6 LONDON BROILS 25 LBS. CHUCK GROUND

USDA Choice

CHUCK OF BEEF 49c lb. APPROXIMATE CUTS. 4 CHUCK STEAKS 1 SHOULDER CLOD ROAST 4 CHUCK ROASTS 4 LBS. BEEF STEW 6 LONDON BROILS 25 LBS. CHUCK GROUND

USDA Choice

CHUCK OF BEEF 49c lb. APPROXIMATE CUTS. 4 CHUCK STEAKS 1 SHOULDER CLOD ROAST 4 CHUCK ROASTS 4 LBS. BEEF STEW 6 LONDON BROILS 25 LBS. CHUCK GROUND

USDA Choice

CHUCK OF BEEF 49c lb. APPROXIMATE CUTS. 4 CHUCK STEAKS 1 SHOULDER CLOD ROAST 4 CHUCK ROASTS 4 LBS. BEEF STEW 6 LONDON BROILS 25 LBS. CHUCK GROUND

USDA Choice

CHUCK OF BEEF 49c lb. APPROXIMATE CUTS. 4 CHUCK STEAKS 1 SHOULDER CLOD ROAST 4 CHUCK ROASTS 4 LBS. BEEF STEW 6 LONDON BROILS 25 LBS. CHUCK GROUND

USDA Choice

CHUCK OF BEEF 49c lb. APPROXIMATE CUTS. 4 CHUCK STEAKS 1 SHOULDER CLOD ROAST 4 CHUCK ROASTS 4 LBS. BEEF STEW 6 LONDON BROILS 25 LBS. CHUCK GROUND

USDA Choice

CHUCK OF BEEF 49c lb. APPROXIMATE CUTS. 4 CHUCK STEAKS 1 SHOULDER CLOD ROAST 4 CHUCK ROASTS 4 LBS. BEEF STEW 6 LONDON BROILS 25 LBS. CHUCK GROUND

USDA Choice

CHUCK OF BEEF 49c lb. APPROXIMATE CUTS. 4 CHUCK STEAKS 1 SHOULDER CLOD ROAST 4 CHUCK ROASTS 4 LBS. BEEF STEW 6 LONDON BROILS 25 LBS. CHUCK GROUND

USDA Choice

CHUCK OF BEEF 49c lb. APPROXIMATE CUTS. 4 CHUCK STEAKS 1 SHOULDER CLOD ROAST 4 CHUCK ROASTS 4 LBS. BEEF STEW 6 LONDON BROILS 25 LBS. CHUCK GROUND

USDA Choice

CHUCK OF BEEF 49c lb. APPROXIMATE CUTS. 4 CHUCK STEAKS 1 SHOULDER CLOD ROAST 4 CHUCK ROASTS 4 LBS. BEEF STEW 6 LONDON BROILS 25 LBS. CHUCK GROUND

USDA Choice

CHUCK OF BEEF 49c lb. APPROXIMATE CUTS. 4 CHUCK STEAKS 1 SHOULDER CLOD ROAST 4 CHUCK ROASTS 4 LBS. BEEF STEW 6 LONDON BROILS 25 LBS. CHUCK GROUND

USDA Choice

CHUCK OF BEEF 49c lb. APPROXIMATE CUTS. 4 CHUCK STEAKS 1 SHOULDER CLOD ROAST 4 CHUCK ROASTS 4 LBS. BEEF STEW 6 LONDON BROILS 25 LBS. CHUCK GROUND

USDA Choice

CHUCK OF BEEF 49c lb. APPROXIMATE CUTS. 4 CHUCK STEAKS 1 SHOULDER CLOD ROAST 4 CHUCK ROASTS 4 LBS. BEEF STEW 6 LONDON BROILS 25 LBS. CHUCK GROUND

USDA Choice

CHUCK OF BEEF 49c lb. APPROXIMATE CUTS. 4 CHUCK STEAKS 1 SHOULDER CLOD ROAST 4 CHUCK ROASTS 4 LBS. BEEF STEW 6 LONDON BROILS 25 LBS. CHUCK GROUND

USDA Choice

CHUCK OF BEEF 49c lb. APPROXIMATE CUTS. 4 CHUCK STEAKS 1 SHOULDER CLOD ROAST 4 CHUCK ROASTS 4 LBS. BEEF STEW 6 LONDON BROILS 25 LBS. CHUCK GROUND

USDA Choice

CHUCK OF BEEF 49c lb. APPROXIMATE CUTS. 4 CHUCK STEAKS 1 SHOULDER CLOD ROAST 4 CHUCK ROASTS 4 LBS. BEEF STEW 6 LONDON BROILS 25 LBS. CHUCK GROUND

USDA Choice

CHUCK OF BEEF 49c lb. APPROXIMATE CUTS. 4 CHUCK STEAKS 1 SHOULDER CLOD ROAST 4 CHUCK ROASTS 4 LBS. BEEF STEW 6 LONDON BROILS 25 LBS. CHUCK GROUND

USDA Choice

CHUCK OF BEEF 49c lb. APPROXIMATE CUTS. 4 CHUCK STEAKS 1 SHOULDER CLOD ROAST 4 CHUCK ROASTS 4 LBS. BEEF STEW 6 LONDON BROILS 25 LBS. CHUCK GROUND

USDA Choice

CHUCK OF BEEF 49c lb. APPROXIMATE CUTS. 4 CHUCK STEAKS 1 SHOULDER CLOD ROAST 4 CHUCK ROASTS 4 LBS. BEEF STEW 6 LONDON BROILS 25 LBS. CHUCK GROUND

USDA Choice

CHUCK OF BEEF 49c lb. APPROXIMATE CUTS. 4 CHUCK STEAKS 1 SHOULDER CLOD ROAST 4 CHUCK ROASTS 4 LBS. BEEF STEW 6 LONDON BROILS 25 LBS. CHUCK GROUND

USDA Choice

CHUCK OF BEEF 49c lb. APPROXIMATE CUTS. 4 CHUCK STEAKS 1 SHOULDER CLOD ROAST 4 CHUCK ROASTS 4 LBS. BEEF STEW 6 LONDON BROILS 25 LBS. CHUCK GROUND

USDA Choice

CHUCK OF BEEF 49c lb. APPROXIMATE CUTS. 4 CHUCK STEAKS 1 SHOULDER CLOD ROAST 4 CHUCK ROASTS 4 LBS. BEEF STEW 6 LONDON BROILS 25 LBS. CHUCK GROUND

USDA Choice

CHUCK OF BEEF 49c lb. APPROXIMATE CUTS. 4 CHUCK STEAKS 1 SHOULDER CLOD ROAST 4 CHUCK ROASTS 4 LBS. BEEF STEW 6 LONDON BROILS 25 LBS. CHUCK GROUND

USDA Choice

CHUCK OF BEEF 49c lb. APPROXIMATE CUTS. 4 CHUCK STEAKS 1 SHOULDER CLOD ROAST 4 CHUCK ROASTS 4 LBS. BEEF STEW 6 LONDON BROILS 25 LBS. CHUCK GROUND

USDA Choice

CHUCK OF BEEF 49c lb. APPROXIMATE CUTS. 4 CHUCK STEAKS 1 SHOULDER CLOD ROAST 4 CHUCK ROASTS 4 LBS. BEEF STEW 6 LONDON BROILS 25 LBS. CHUCK GROUND

USDA Choice

CHUCK OF BEEF 49c lb. APPROXIMATE CUTS. 4 CHUCK STEAKS 1 SHOULDER CLOD ROAST 4 CHUCK ROASTS 4 LBS. BEEF STEW 6 LONDON BROILS 25 LBS. CHUCK GROUND

USDA Choice

CHUCK OF BEEF 49c lb. APPROXIMATE CUTS. 4 CHUCK STEAKS 1 SHOULDER CLOD ROAST 4 CHUCK ROASTS 4 LBS. BEEF STEW 6 LONDON BROILS 25 LBS. CHUCK GROUND

USDA Choice

CHUCK OF BEEF 49c lb. APPROXIMATE CUTS. 4 CHUCK STEAKS 1 SHOULDER CLOD ROAST 4 CHUCK ROASTS 4 LBS. BEEF STEW 6 LONDON BROILS 25 LBS. CHUCK GROUND

USDA Choice

CHUCK OF BEEF 49c lb. APPROXIMATE CUTS. 4 CHUCK STEAKS 1 SHOULDER CLOD ROAST 4 CHUCK ROASTS 4 LBS. BEEF STEW 6 LONDON BROILS 25 LBS. CHUCK GROUND

USDA Choice

CHUCK OF BEEF 49c lb. APPROXIMATE CUTS. 4 CHUCK STEAKS 1 SHOULDER CLOD ROAST 4 CHUCK ROASTS 4 LBS. BEEF STEW 6 LONDON BROILS 25 LBS. CHUCK GROUND

USDA Choice

CHUCK OF BEEF 49c lb. APPROXIMATE CUTS. 4 CHUCK STEAKS 1 SHOULDER CLOD ROAST 4 CHUCK ROASTS 4 LBS. BEEF STEW 6 LONDON BROILS 25 LBS. CHUCK GROUND

USDA Choice

CHUCK OF BEEF 49c lb. APPROXIMATE CUTS. 4 CHUCK STEAKS 1 SHOULDER CLOD ROAST 4 CHUCK ROASTS 4 LBS. BEEF STEW 6 LONDON BROILS 25 LBS. CHUCK GROUND

USDA Choice

CHUCK OF BEEF 49c lb. APPROXIMATE CUTS. 4 CHUCK STEAKS 1 SHOULDER CLOD ROAST 4 CHUCK ROASTS 4 LBS. BEEF STEW 6 LONDON BROILS 25 LBS. CHUCK GROUND

USDA Choice

CHUCK OF BEEF 49c lb. APPROXIMATE CUTS. 4 CHUCK STEAKS 1 SHOULDER CLOD ROAST 4 CHUCK ROASTS 4 LBS. BEEF STEW 6 LONDON BROILS 25 LBS. CHUCK GROUND

USDA Choice

CHUCK OF BEEF 49c lb. APPROXIMATE CUTS. 4 CHUCK STEAKS 1 SHOULDER CLOD ROAST 4 CHUCK ROASTS 4 LBS. BEEF STEW 6 LONDON BROILS 25 LBS. CHUCK GROUND

USDA Choice

CHUCK OF BEEF 49c lb. APPROXIMATE CUTS. 4 CHUCK STEAKS 1 SHOULDER CLOD ROAST 4 CHUCK ROASTS 4 LBS. BEEF STEW 6 LONDON BROILS 25 LBS. CHUCK GROUND

USDA Choice

CHUCK OF BEEF 49c lb. APPROXIMATE CUTS. 4 CHUCK STEAKS 1 SHOULDER CLOD ROAST 4 CHUCK ROASTS 4 LBS. BEEF STEW 6 LONDON BROILS 25 LBS. CHUCK GROUND

USDA Choice

CHUCK OF BEEF 49c lb. APPROXIMATE CUTS. 4 CHUCK STEAKS 1 SHOULDER CLOD ROAST 4 CHUCK ROASTS 4 LBS. BEEF STEW 6 LONDON BROILS 25 LBS. CHUCK GROUND

USDA Choice

CHUCK OF BEEF 49c lb. APPROXIMATE CUTS. 4 CHUCK STEAKS 1 SHOULDER CLOD ROAST 4 CHUCK ROASTS 4 LBS. BEEF STEW 6 LONDON BROILS 25 LBS. CHUCK GROUND

USDA Choice

CHUCK OF BEEF 49c lb. APPROXIMATE CUTS. 4 CHUCK STEAKS 1 SHOULDER CLOD ROAST 4 CHUCK ROASTS 4 LBS. BEEF STEW 6 LONDON BROILS 25 LBS. CHUCK GROUND

USDA Choice

CHUCK OF BEEF 49c lb. APPROXIMATE CUTS. 4 CHUCK STEAKS 1 SHOULDER CLOD ROAST 4 CHUCK ROASTS 4 LBS. BEEF STEW 6 LONDON BROILS 25 LBS. CHUCK GROUND



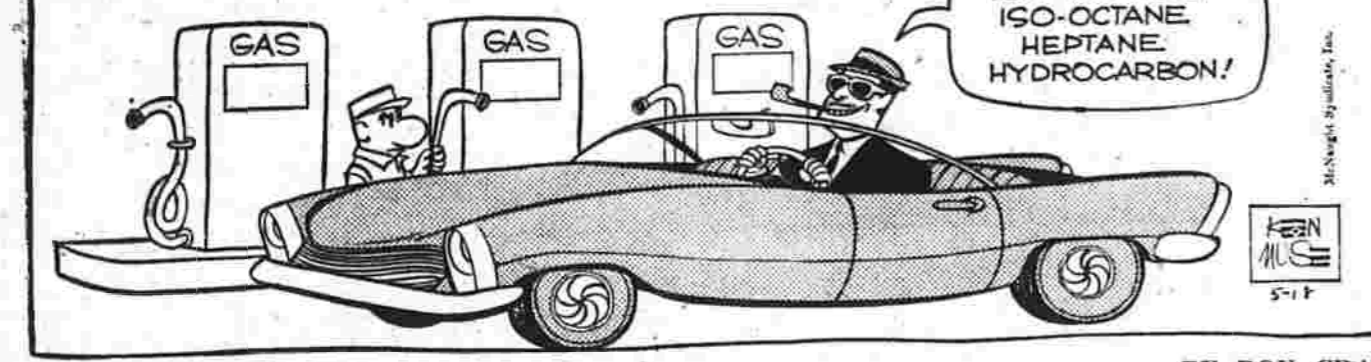
BUGS BUNNY BY V. T. HAMLIN



AILLY OOP BY V. T. HAMLIN



DAVY JONES BY JEFF AND McWILLIAMS



WAYOUT BY KEN MUSE



BUZZY SAWYER BY ROY CRANE



MICKY FINN BY LANK LEONARD



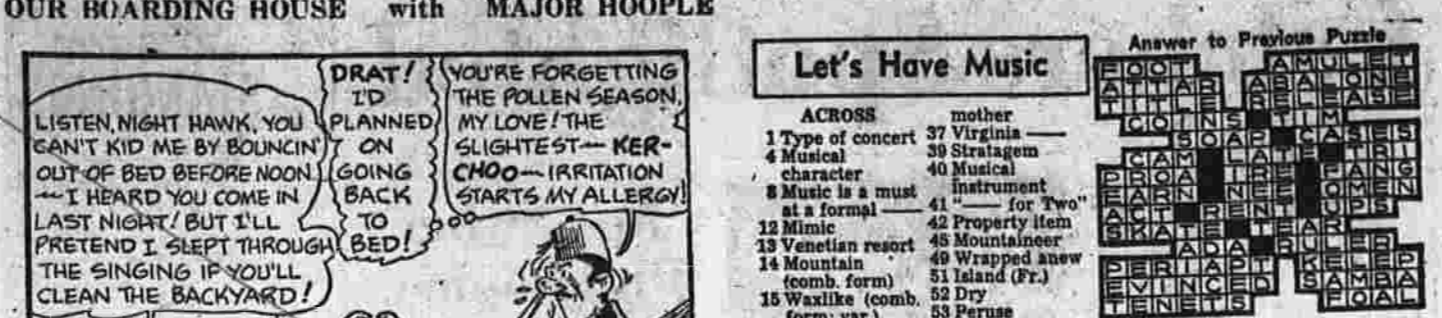
MIC. ABERNATHY BY ROLSTON JONES AND FRANK RIDGEWAY



PHINILLA'S POP BY AL VERMEER



ROBIN MALONE BY BOB LUBBERS



OUR BOARDING HOUSE WITH MAJOR HOOPLE BY J. B. WILLIAMS



LET'S HAVE MUSIC BY J. B. WILLIAMS



OUT OUR WAY BY J. B. WILLIAMS



SHORT RIBS BY FRANK O'NEAL



THE WILLETS BY WALT WATTERBERG



MORTY MECKLE BY DICK CAVALLI



CAPTAIN EASY BY LESLIE TURNER



WESTERN D. BY ROURON



LITTLE SPORTS BY ROURON

Let's Have Music. Advertisement for musical instruments and services. Includes a list of items like '1 Type of concert', '2 Violins', '3 Trumpets', etc.

Trucks-Tractors 2. Advertisement for trucks and tractors. Includes '1965 VOLKSWAGEN sedan', '1961 CADILLAC', etc.

Trucks-Tractors 2. Advertisement for trucks and tractors. Includes '1965 VOLKSWAGEN sedan', '1961 CADILLAC', etc.

Trucks-Tractors 2. Advertisement for trucks and tractors. Includes '1965 VOLKSWAGEN sedan', '1961 CADILLAC', etc.

Trucks-Tractors 2. Advertisement for trucks and tractors. Includes '1965 VOLKSWAGEN sedan', '1961 CADILLAC', etc.

Trucks-Tractors 2. Advertisement for trucks and tractors. Includes '1965 VOLKSWAGEN sedan', '1961 CADILLAC', etc.

Trucks-Tractors 2. Advertisement for trucks and tractors. Includes '1965 VOLKSWAGEN sedan', '1961 CADILLAC', etc.

CLASSIFIED ADVERTISING. Advertisement for classified advertising services. Includes 'CLASSIFIED ADVERTISING DEPT. HOURS 8 A.M. TO 5 P.M.' and 'COPY CLOSING TIME FOR CLASSIFIED ADVT 5 P.M. DAY BEFORE PUBLICATION.'

24-Hour Answer Service. Advertisement for a 24-hour answer service. Includes '24-Hour Answer Service Free to Herald Readers' and 'EDWARDS ANSWERING SERVICE 649-0500 875-2519'.

HERALD BOX LETTERS. Advertisement for a box letter service. Includes 'HERALD BOX LETTERS For Your Information' and 'THE HERALD will not disclose the identity of any advertiser using box letters.'

Automobiles For Sale. Advertisement for automobiles for sale. Includes '1965 COMET - 6 cylinder, standard transmission, excellent condition, \$1,000. 649-3827.'

Automobiles For Sale. Advertisement for automobiles for sale. Includes '1965 VOLKSWAGEN sedan, sun-roof, call 649-9333, after 6 p.m.'

Automobiles For Sale. Advertisement for automobiles for sale. Includes '1965 VOLKSWAGEN sedan, sun-roof, call 649-9333, after 6 p.m.'

Automobiles For Sale. Advertisement for automobiles for sale. Includes '1965 VOLKSWAGEN sedan, sun-roof, call 649-9333, after 6 p.m.'

Business Services Offered. Advertisement for business services. Includes 'SALES and Service on Arden, Hahn Bolje, Jacobson lawn mowers. Also Homelite chain saws and International Cub Cadet Tractors.'

Business Services Offered. Advertisement for business services. Includes 'SALES and Service on Arden, Hahn Bolje, Jacobson lawn mowers. Also Homelite chain saws and International Cub Cadet Tractors.'

Business Services Offered. Advertisement for business services. Includes 'SALES and Service on Arden, Hahn Bolje, Jacobson lawn mowers. Also Homelite chain saws and International Cub Cadet Tractors.'

Business Services Offered. Advertisement for business services. Includes 'SALES and Service on Arden, Hahn Bolje, Jacobson lawn mowers. Also Homelite chain saws and International Cub Cadet Tractors.'

Business Services Offered. Advertisement for business services. Includes 'SALES and Service on Arden, Hahn Bolje, Jacobson lawn mowers. Also Homelite chain saws and International Cub Cadet Tractors.'

Business Services Offered. Advertisement for business services. Includes 'SALES and Service on Arden, Hahn Bolje, Jacobson lawn mowers. Also Homelite chain saws and International Cub Cadet Tractors.'

Business Services Offered. Advertisement for business services. Includes 'SALES and Service on Arden, Hahn Bolje, Jacobson lawn mowers. Also Homelite chain saws and International Cub Cadet Tractors.'

THEIR OUGHTA BE A LAW. Advertisement for a law firm. Includes 'MISS GRONSTONE AFTER 20 YEARS, FINALLY WORKS HERSELF UP TO THE PRINCIPAL SALARY OF \$25,000 PER YEAR.'

THEIR OUGHTA BE A LAW. Advertisement for a law firm. Includes 'MISS GRONSTONE AFTER 20 YEARS, FINALLY WORKS HERSELF UP TO THE PRINCIPAL SALARY OF \$25,000 PER YEAR.'

THEIR OUGHTA BE A LAW. Advertisement for a law firm. Includes 'MISS GRONSTONE AFTER 20 YEARS, FINALLY WORKS HERSELF UP TO THE PRINCIPAL SALARY OF \$25,000 PER YEAR.'

THEIR OUGHTA BE A LAW. Advertisement for a law firm. Includes 'MISS GRONSTONE AFTER 20 YEARS, FINALLY WORKS HERSELF UP TO THE PRINCIPAL SALARY OF \$25,000 PER YEAR.'

THEIR OUGHTA BE A LAW. Advertisement for a law firm. Includes 'MISS GRONSTONE AFTER 20 YEARS, FINALLY WORKS HERSELF UP TO THE PRINCIPAL SALARY OF \$25,000 PER YEAR.'

THEIR OUGHTA BE A LAW. Advertisement for a law firm. Includes 'MISS GRONSTONE AFTER 20 YEARS, FINALLY WORKS HERSELF UP TO THE PRINCIPAL SALARY OF \$25,000 PER YEAR.'

THEIR OUGHTA BE A LAW. Advertisement for a law firm. Includes 'MISS GRONSTONE AFTER 20 YEARS, FINALLY WORKS HERSELF UP TO THE PRINCIPAL SALARY OF \$25,000 PER YEAR.'

Help Wanted - Female. Advertisement for help wanted. Includes 'CLEANING counter clerks, steady work. Apply variety of work for industrial supply firm. Modern East Hartford location. Salary and fringe benefits. Call 298-8291 for appointment.'

Help Wanted - Female. Advertisement for help wanted. Includes 'CLEANING counter clerks, steady work. Apply variety of work for industrial supply firm. Modern East Hartford location. Salary and fringe benefits. Call 298-8291 for appointment.'

Help Wanted - Female. Advertisement for help wanted. Includes 'CLEANING counter clerks, steady work. Apply variety of work for industrial supply firm. Modern East Hartford location. Salary and fringe benefits. Call 298-8291 for appointment.'

Help Wanted - Female. Advertisement for help wanted. Includes 'CLEANING counter clerks, steady work. Apply variety of work for industrial supply firm. Modern East Hartford location. Salary and fringe benefits. Call 298-8291 for appointment.'

Help Wanted - Female. Advertisement for help wanted. Includes 'CLEANING counter clerks, steady work. Apply variety of work for industrial supply firm. Modern East Hartford location. Salary and fringe benefits. Call 298-8291 for appointment.'

Help Wanted - Female. Advertisement for help wanted. Includes 'CLEANING counter clerks, steady work. Apply variety of work for industrial supply firm. Modern East Hartford location. Salary and fringe benefits. Call 298-8291 for appointment.'

Help Wanted - Female. Advertisement for help wanted. Includes 'CLEANING counter clerks, steady work. Apply variety of work for industrial supply firm. Modern East Hartford location. Salary and fringe benefits. Call 298-8291 for appointment.'

HELP WANTED YOUNG MAN TO LEARN THE PRINTING BUSINESS. Advertisement for a printing business. Includes '37 1/2-HOUR WEEK • PAID VACATION PAID RETIREMENT PLAN'.

PUBLIC AUCTION FORECLOSURE SALE. Advertisement for a public auction. Includes '262-264 West Center Street Manchester, Conn.'

PUBLIC AUCTION FORECLOSURE SALE. Advertisement for a public auction. Includes '262-264 West Center Street Manchester, Conn.'

AIRCRAFT JOBS ARE BETTER JOBS. Advertisement for aircraft jobs. Includes 'If you are a stenographer, clerk typist or key-punch operator, some of the best jobs in town are open now at Pratt & Whitney Aircraft.'

AIRCRAFT JOBS ARE BETTER JOBS. Advertisement for aircraft jobs. Includes 'If you are a stenographer, clerk typist or key-punch operator, some of the best jobs in town are open now at Pratt & Whitney Aircraft.'

AIRCRAFT JOBS ARE BETTER JOBS. Advertisement for aircraft jobs. Includes 'If you are a stenographer, clerk typist or key-punch operator, some of the best jobs in town are open now at Pratt & Whitney Aircraft.'

AIRCRAFT JOBS ARE BETTER JOBS. Advertisement for aircraft jobs. Includes 'If you are a stenographer, clerk typist or key-punch operator, some of the best jobs in town are open now at Pratt & Whitney Aircraft.'

CLASSIFIED ADVERTISING

CLASSIFIED ADVERTISING DEPT. HOURS 8 A.M. TO 5 P.M. COPY CLOSING TIME FOR CLASSIFIED ADVT. 5 P.M. DAILY BEFORE PUBLICATION. Deadline for Saturday and Monday is 3 p.m. Friday.

YOUR COOPERATION WILL BE APPRECIATED DIAL 643-2711

Continued From Preceding Page

Help Wanted—Female 35

High School SENIORS SATURDAY INTERVIEWS

OUR OFFICE WILL BE OPEN THIS SATURDAY

May 20, 1967

9 a.m.-12 Noon

We are interviewing seniors for fine full-time positions available after graduation in June.

CLERKS CLERK TYPISTS TYPISTS FIGURERS

TRANSCRIPTIONISTS

No appointment needed. Just drop by our front door and ask for the Personnel Dept.

Ashley and Palm/Ashley bus stop right in front. Or you may park in our front driveway.

P.S. You may also have an interview daily between 8 a.m.-3 p.m.

THE CONNECTICUT MUTUAL LIFE INSURANCE COMPANY

140 Garden St. Hartford

An Equal Opportunity Employer

1866

AN EQUAL OPPORTUNITY EMPLOYER

Full-time help wanted. Apply in person, Burger Chief, 285 Main St.

Experienced operator with knowledge of cook and baker. Salary \$4.00. Call 643-1851.

LABORER—Experienced preferred. Full-time, driver's license required. 643-0851 after 5:30.

MAN WANTED to work in lumber yard. Must be experienced. Call 643-1851.

GERMAN SHEPHERD puppies for sale. Call 643-6478.

DOG—Black and white, 10 weeks old. Call 643-1851.

DOG—Small, black and white, 10 weeks old. Call 643-1851.

DOG—Small, black and white, 10 weeks old. Call 643-1851.

DOG—Small, black and white, 10 weeks old. Call 643-1851.

DOG—Small, black and white, 10 weeks old. Call 643-1851.

DOG—Small, black and white, 10 weeks old. Call 643-1851.

DOG—Small, black and white, 10 weeks old. Call 643-1851.

DOG—Small, black and white, 10 weeks old. Call 643-1851.

DOG—Small, black and white, 10 weeks old. Call 643-1851.

DOG—Small, black and white, 10 weeks old. Call 643-1851.

DOG—Small, black and white, 10 weeks old. Call 643-1851.

DOG—Small, black and white, 10 weeks old. Call 643-1851.

DOG—Small, black and white, 10 weeks old. Call 643-1851.

DOG—Small, black and white, 10 weeks old. Call 643-1851.

DOG—Small, black and white, 10 weeks old. Call 643-1851.

DOG—Small, black and white, 10 weeks old. Call 643-1851.

Help Wanted—Male 36

Electrician, full time, steady employment, insurance benefits, paid holidays and vacation. Call between 8 a.m. and 5 p.m. Roberts Electric Co., South Windsor, 644-0108.

Licensed plumber wanted. 644-1317.

DRAPSMAN For varied duties in modern working conditions and benefits, will train.

WIPCO MILLWORK 73 Toland Pike. 643-5235

LATHE OPERATORS—first, second and third shifts. Top wages, shift bonuses, and fringe benefits for full-time and part-time workers. Regular shift assignments. Fully accredited chronic disease hospital. Offering rehabilitation services to patients at Surgery, Teen Town, New Horizons, and Griffin levels. For interview, contact Mrs. Jeanette Ertley, Director of Nurses, Memorial Hospital, 2150 Corbin Ave., New Britain, Conn. An equal opportunity employer. M & P.

EXPERIENCED welder—knowledge of welding, part-time or full-time. 643-0852 between 8 a.m.-12 noon.

COUNTESS GIRD, Monday through Friday, 11 a.m. to 11:17 p.m. in person, Burger Chief, 285 Main St.

WANTED—woman for general office work and bookkeeping. Apply in person at Johnson Point, Main St.

WOMAN TO collect gas a.m.-2 p.m. Miller Farms, North Coventry, 745-6252.

EXPERIENCED welder—knowledge of welding, part-time or full-time. 643-0852 between 8 a.m.-12 noon.

COUNTESS GIRD, Monday through Friday, 11 a.m. to 11:17 p.m. in person, Burger Chief, 285 Main St.

WANTED—woman for general office work and bookkeeping. Apply in person at Johnson Point, Main St.

WOMAN TO collect gas a.m.-2 p.m. Miller Farms, North Coventry, 745-6252.

EXPERIENCED welder—knowledge of welding, part-time or full-time. 643-0852 between 8 a.m.-12 noon.

COUNTESS GIRD, Monday through Friday, 11 a.m. to 11:17 p.m. in person, Burger Chief, 285 Main St.

WANTED—woman for general office work and bookkeeping. Apply in person at Johnson Point, Main St.

WOMAN TO collect gas a.m.-2 p.m. Miller Farms, North Coventry, 745-6252.

EXPERIENCED welder—knowledge of welding, part-time or full-time. 643-0852 between 8 a.m.-12 noon.

COUNTESS GIRD, Monday through Friday, 11 a.m. to 11:17 p.m. in person, Burger Chief, 285 Main St.

WANTED—woman for general office work and bookkeeping. Apply in person at Johnson Point, Main St.

WOMAN TO collect gas a.m.-2 p.m. Miller Farms, North Coventry, 745-6252.

EXPERIENCED welder—knowledge of welding, part-time or full-time. 643-0852 between 8 a.m.-12 noon.

COUNTESS GIRD, Monday through Friday, 11 a.m. to 11:17 p.m. in person, Burger Chief, 285 Main St.

WANTED—woman for general office work and bookkeeping. Apply in person at Johnson Point, Main St.

WOMAN TO collect gas a.m.-2 p.m. Miller Farms, North Coventry, 745-6252.

EXPERIENCED welder—knowledge of welding, part-time or full-time. 643-0852 between 8 a.m.-12 noon.

COUNTESS GIRD, Monday through Friday, 11 a.m. to 11:17 p.m. in person, Burger Chief, 285 Main St.

WANTED—woman for general office work and bookkeeping. Apply in person at Johnson Point, Main St.

WOMAN TO collect gas a.m.-2 p.m. Miller Farms, North Coventry, 745-6252.

EXPERIENCED welder—knowledge of welding, part-time or full-time. 643-0852 between 8 a.m.-12 noon.

COUNTESS GIRD, Monday through Friday, 11 a.m. to 11:17 p.m. in person, Burger Chief, 285 Main St.

WANTED—woman for general office work and bookkeeping. Apply in person at Johnson Point, Main St.

WOMAN TO collect gas a.m.-2 p.m. Miller Farms, North Coventry, 745-6252.

EXPERIENCED welder—knowledge of welding, part-time or full-time. 643-0852 between 8 a.m.-12 noon.

COUNTESS GIRD, Monday through Friday, 11 a.m. to 11:17 p.m. in person, Burger Chief, 285 Main St.

WANTED—woman for general office work and bookkeeping. Apply in person at Johnson Point, Main St.

WOMAN TO collect gas a.m.-2 p.m. Miller Farms, North Coventry, 745-6252.

EXPERIENCED welder—knowledge of welding, part-time or full-time. 643-0852 between 8 a.m.-12 noon.

COUNTESS GIRD, Monday through Friday, 11 a.m. to 11:17 p.m. in person, Burger Chief, 285 Main St.

WANTED—woman for general office work and bookkeeping. Apply in person at Johnson Point, Main St.

WOMAN TO collect gas a.m.-2 p.m. Miller Farms, North Coventry, 745-6252.

EXPERIENCED welder—knowledge of welding, part-time or full-time. 643-0852 between 8 a.m.-12 noon.

COUNTESS GIRD, Monday through Friday, 11 a.m. to 11:17 p.m. in person, Burger Chief, 285 Main St.

WANTED—woman for general office work and bookkeeping. Apply in person at Johnson Point, Main St.

WOMAN TO collect gas a.m.-2 p.m. Miller Farms, North Coventry, 745-6252.

Articles For Sale 45

SCHEURED LOAM for best lawn and garden. Also sand, gravel and fill. Greenleaf Ref. Inc., Andover, 743-7886.

DARK RUG, stone floor, 8 1/2 x 11, \$100. Call 643-9504.

SHOPMAN AND DRIVERS For varied duties in modern working conditions and benefits, will train.

WIPCO MILLWORK 73 Toland Pike. 643-5235

LATHE OPERATORS—first, second and third shifts. Top wages, shift bonuses, and fringe benefits for full-time and part-time workers. Regular shift assignments. Fully accredited chronic disease hospital. Offering rehabilitation services to patients at Surgery, Teen Town, New Horizons, and Griffin levels. For interview, contact Mrs. Jeanette Ertley, Director of Nurses, Memorial Hospital, 2150 Corbin Ave., New Britain, Conn. An equal opportunity employer. M & P.

EXPERIENCED welder—knowledge of welding, part-time or full-time. 643-0852 between 8 a.m.-12 noon.

COUNTESS GIRD, Monday through Friday, 11 a.m. to 11:17 p.m. in person, Burger Chief, 285 Main St.

WANTED—woman for general office work and bookkeeping. Apply in person at Johnson Point, Main St.

WOMAN TO collect gas a.m.-2 p.m. Miller Farms, North Coventry, 745-6252.

EXPERIENCED welder—knowledge of welding, part-time or full-time. 643-0852 between 8 a.m.-12 noon.

COUNTESS GIRD, Monday through Friday, 11 a.m. to 11:17 p.m. in person, Burger Chief, 285 Main St.

WANTED—woman for general office work and bookkeeping. Apply in person at Johnson Point, Main St.

WOMAN TO collect gas a.m.-2 p.m. Miller Farms, North Coventry, 745-6252.

EXPERIENCED welder—knowledge of welding, part-time or full-time. 643-0852 between 8 a.m.-12 noon.

COUNTESS GIRD, Monday through Friday, 11 a.m. to 11:17 p.m. in person, Burger Chief, 285 Main St.

WANTED—woman for general office work and bookkeeping. Apply in person at Johnson Point, Main St.

WOMAN TO collect gas a.m.-2 p.m. Miller Farms, North Coventry, 745-6252.

EXPERIENCED welder—knowledge of welding, part-time or full-time. 643-0852 between 8 a.m.-12 noon.

COUNTESS GIRD, Monday through Friday, 11 a.m. to 11:17 p.m. in person, Burger Chief, 285 Main St.

WANTED—woman for general office work and bookkeeping. Apply in person at Johnson Point, Main St.

WOMAN TO collect gas a.m.-2 p.m. Miller Farms, North Coventry, 745-6252.

EXPERIENCED welder—knowledge of welding, part-time or full-time. 643-0852 between 8 a.m.-12 noon.

COUNTESS GIRD, Monday through Friday, 11 a.m. to 11:17 p.m. in person, Burger Chief, 285 Main St.

WANTED—woman for general office work and bookkeeping. Apply in person at Johnson Point, Main St.

WOMAN TO collect gas a.m.-2 p.m. Miller Farms, North Coventry, 745-6252.

EXPERIENCED welder—knowledge of welding, part-time or full-time. 643-0852 between 8 a.m.-12 noon.

COUNTESS GIRD, Monday through Friday, 11 a.m. to 11:17 p.m. in person, Burger Chief, 285 Main St.

WANTED—woman for general office work and bookkeeping. Apply in person at Johnson Point, Main St.

WOMAN TO collect gas a.m.-2 p.m. Miller Farms, North Coventry, 745-6252.

EXPERIENCED welder—knowledge of welding, part-time or full-time. 643-0852 between 8 a.m.-12 noon.

COUNTESS GIRD, Monday through Friday, 11 a.m. to 11:17 p.m. in person, Burger Chief, 285 Main St.

WANTED—woman for general office work and bookkeeping. Apply in person at Johnson Point, Main St.

WOMAN TO collect gas a.m.-2 p.m. Miller Farms, North Coventry, 745-6252.

EXPERIENCED welder—knowledge of welding, part-time or full-time. 643-0852 between 8 a.m.-12 noon.

COUNTESS GIRD, Monday through Friday, 11 a.m. to 11:17 p.m. in person, Burger Chief, 285 Main St.

WANTED—woman for general office work and bookkeeping. Apply in person at Johnson Point, Main St.

WOMAN TO collect gas a.m.-2 p.m. Miller Farms, North Coventry, 745-6252.

EXPERIENCED welder—knowledge of welding, part-time or full-time. 643-0852 between 8 a.m.-12 noon.

COUNTESS GIRD, Monday through Friday, 11 a.m. to 11:17 p.m. in person, Burger Chief, 285 Main St.

WANTED—woman for general office work and bookkeeping. Apply in person at Johnson Point, Main St.

WOMAN TO collect gas a.m.-2 p.m. Miller Farms, North Coventry, 745-6252.

EXPERIENCED welder—knowledge of welding, part-time or full-time. 643-0852 between 8 a.m.-12 noon.

COUNTESS GIRD, Monday through Friday, 11 a.m. to 11:17 p.m. in person, Burger Chief, 285 Main St.

WANTED—woman for general office work and bookkeeping. Apply in person at Johnson Point, Main St.

WOMAN TO collect gas a.m.-2 p.m. Miller Farms, North Coventry, 745-6252.

Household Goods 51

CLEAN, USED refrigerators, ranges, automatic washers, and dryers. Call 643-2171.

SEWING MACHINE—Singer automatic, 1000, cabinet, button hole, embroidery. Original like new condition. Originally owned by Mrs. J. J. Deane, 643-2171.

FRONT ROOM for rent, centrally located, parking, 800 Birch St. 643-7129.

GENTLEMAN—60 room, rent, high housekeeping and bath, parking, 48—St. John St. 643-0572.

ROOM FOR lady or gentleman, quiet, convenient location, 224 Charter Oak St. 643-8368.

Apartment—4 1/2 room, centrally located, parking, 800 Birch St. 643-7129.

Apartment—4 1/2 room, centrally located, parking, 800 Birch St. 643-7129.

Apartment—4 1/2 room, centrally located, parking, 800 Birch St. 643-7129.

Apartment—4 1/2 room, centrally located, parking, 800 Birch St. 643-7129.

Apartment—4 1/2 room, centrally located, parking, 800 Birch St. 643-7129.

Apartment—4 1/2 room, centrally located, parking, 800 Birch St. 643-7129.

Apartment—4 1/2 room, centrally located, parking, 800 Birch St. 643-7129.

Apartment—4 1/2 room, centrally located, parking, 800 Birch St. 643-7129.

Apartment—4 1/2 room, centrally located, parking, 800 Birch St. 643-7129.

Apartment—4 1/2 room, centrally located, parking, 800 Birch St. 643-7129.

Apartment—4 1/2 room, centrally located, parking, 800 Birch St. 643-7129.

Apartment—4 1/2 room, centrally located, parking, 800 Birch St. 643-7129.

Apartment—4 1/2 room, centrally located, parking, 800 Birch St. 643-7129.

Apartment—4 1/2 room, centrally located, parking, 800 Birch St. 643-7129.

Apartment—4 1/2 room, centrally located, parking, 800 Birch St. 643-7129.

Apartment—4 1/2 room, centrally located, parking, 800 Birch St. 643-7129.

Apartment—4 1/2 room, centrally located, parking, 800 Birch St. 643-7129.

Apartment—4 1/2 room, centrally located, parking, 800 Birch St. 643-7129.

Apartment—4 1/2 room, centrally located, parking, 800 Birch St. 643-7129.

Apartment—4 1/2 room, centrally located, parking, 800 Birch St. 643-7129.

Apartment—4 1/2 room, centrally located, parking, 800 Birch St. 643-7129.

Apartment—4 1/2 room, centrally located, parking, 800 Birch St. 643-7129.

Apartment—4 1/2 room, centrally located, parking, 800 Birch St. 643-7129.

Apartment—4 1/2 room, centrally located, parking, 800 Birch St. 643-7129.

Apartment—4 1/2 room, centrally located, parking, 800 Birch St. 643-7129.

Apartment—4 1/2 room, centrally located, parking, 800 Birch St. 643-7129.

Apartment—4 1/2 room, centrally located, parking, 800 Birch St. 643-7129.

Apartment—4 1/2 room, centrally located, parking, 800 Birch St. 643-7129.

Apartment—4 1/2 room, centrally located, parking, 800 Birch St. 643-7129.

Apartment—4 1/2 room, centrally located, parking, 800 Birch St. 643-7129.

Apartment—4 1/2 room, centrally located, parking, 800 Birch St. 643-7129.

Apartment—4 1/2 room, centrally located, parking, 800 Birch St. 643-7129.

Apartment—4 1/2 room, centrally located, parking, 800 Birch St. 643-7129.

Apartment—4 1/2 room, centrally located, parking, 800 Birch St. 643-7129.

Apartment—4 1/2 room, centrally located, parking, 800 Birch St. 643-7129.

Apartment—4 1/2 room, centrally located, parking, 800 Birch St. 643-7129.

Apartment—4 1/2 room, centrally located, parking, 800 Birch St. 643-7129.

Apartment—4 1/2 room, centrally located, parking, 800 Birch St. 643-7129.

Apartment—4 1/2 room, centrally located, parking, 800 Birch St. 643-7129.

Apartment—4 1/2 room, centrally located, parking, 800 Birch St. 643-7129.

Rooms Without Board 59

THE THOMPSON House, 200 Main St., 1175 number. Referring to 1175 number. Referring to 1175 number. Referring to 1175 number.

CLEAN FURNISHED room for rent, centrally located, parking, 800 Birch St. 643-7129.

FRONT ROOM for rent, centrally located, parking, 800 Birch St. 643-7129.

GENTLEMAN—60 room, rent, high housekeeping and bath, parking, 48—St. John St. 643-0572.

ROOM FOR lady or gentleman, quiet, convenient location, 224 Charter Oak St. 643-8368.

Apartment—4 1/2 room, centrally located, parking, 800 Birch St. 643-7129.

Apartment—4 1/2 room, centrally located, parking, 800 Birch St. 643-7129.

Apartment—4 1/2 room, centrally located, parking, 800 Birch St. 643-7129.

Apartment—4 1/2 room, centrally located, parking, 800 Birch St. 643-7129.

Apartment—4 1/2 room, centrally located, parking, 800 Birch St. 643-7129.

Apartment—4 1/2 room, centrally located, parking, 800 Birch St. 643-7129.

Apartment—4 1/2 room, centrally located, parking, 800 Birch St. 643-7129.

Apartment—4 1/2 room, centrally located, parking, 800 Birch St. 643-7129.

Apartment—4 1/2 room, centrally located, parking, 800 Birch St. 643-7129.

Apartment—4 1/2 room, centrally located, parking, 800 Birch St. 643-7129.

Apartment—4 1/2 room, centrally located, parking, 800 Birch St

